

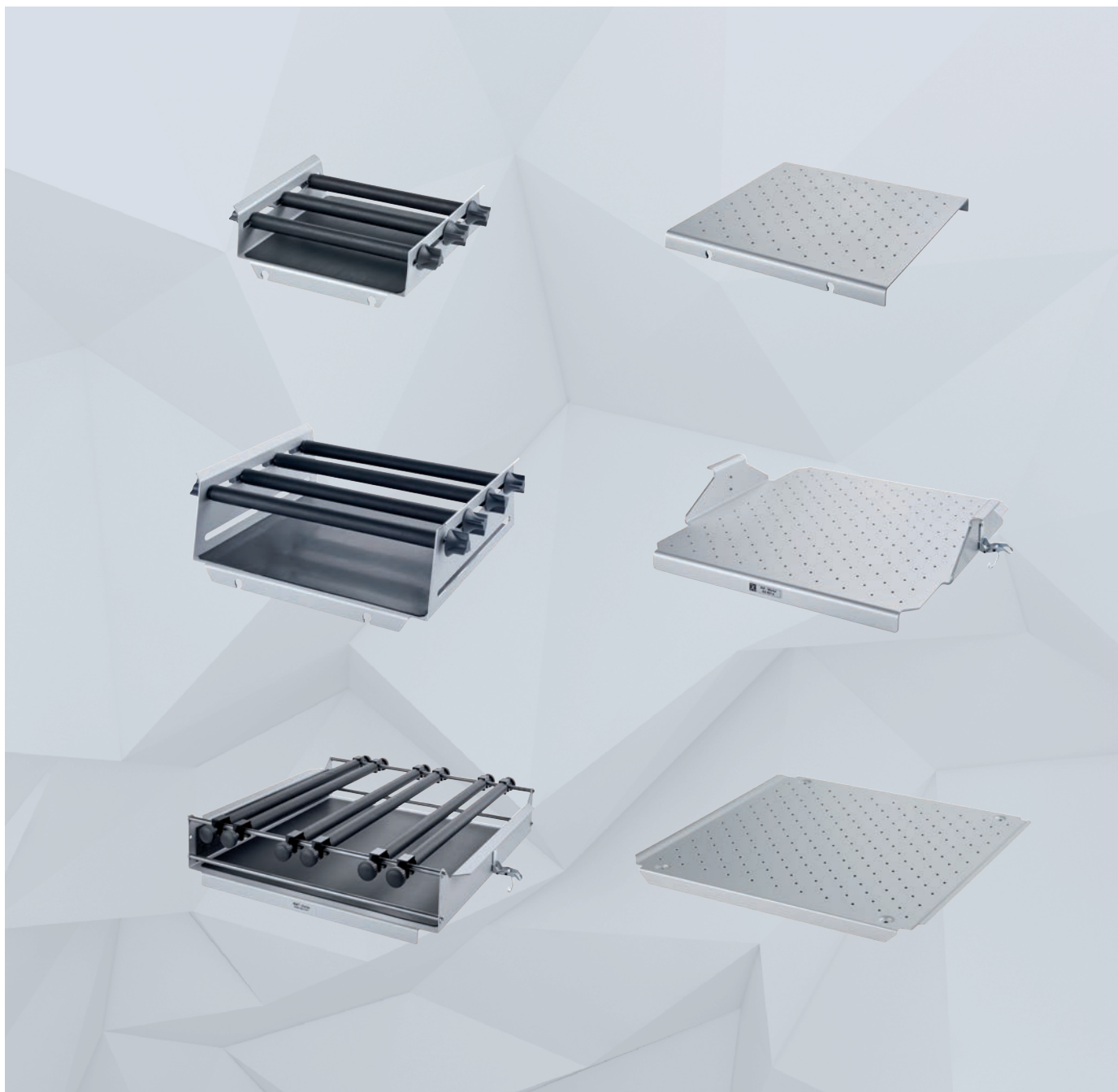
ΔΙΑ•Μ
современная лаборатория

www.dia-m.ru
заказ on-line

IKA

designed for scientists

EN

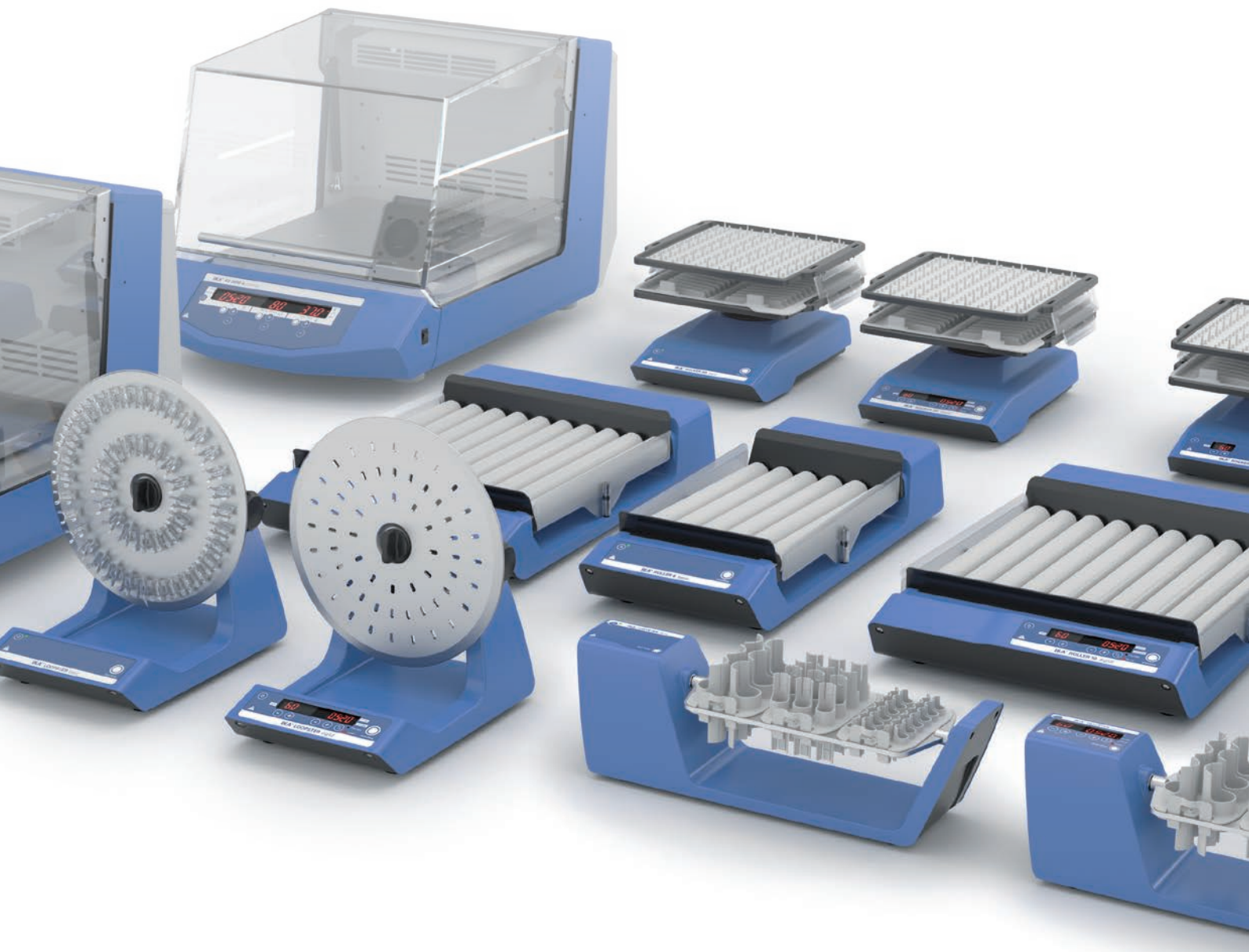


SELECTION GUIDE
HOW TO FIND THE RIGHT SHAKER AND ATTACHMENTS

Shakers

/// Finding the right attachment for your application

IKA offers the perfect lab shakers for mixing and shaking tasks. In addition to the tried and tested orbital shakers and horizontal shakers, the innovative incubator shakers are gaining popularity in laboratories. Their precise temperature control make the devices a reliable asset in every lab. They can carry various attachment combinations like fixing clip attachments, universal attachments or STICKMAX.



How to find the right shaker

/// Your selection guide

| Application | Shaking diameter | Max. permissible shaking weight | Speed range | Recommended IKA device |
|-------------|------------------|---------------------------------|-------------|------------------------|
|-------------|------------------|---------------------------------|-------------|------------------------|



Vortex

The cup generates a 'whirlpool' vortex action

| | | | | |
|--|--------|--------------------------|------------------|---|
| Suitable for shaking small vessels and microtiter plates | 3 mm | 0,5 kg | 0 – 3000 rpm | MATRIX Orbital MATRIX Orbital Delta MATRIX Orbital Delta Plus |
| | 4,5 mm | 0,5 kg | 0/200 – 3000 rpm | MS 3 basic digital control |
| | 4,5 mm | 0,5 kg | 2800 rpm (fixed) | Hula Dancer basic |
| Ideal for use with all small vessels of up to 30 mm in diameter, e.g. test tubes, centrifuge tubes and microcentrifuge tubes | 4,5 mm | 0,5 kg | 1200 – 2800 rpm | Hula Dancer digital |
| | 4,5 mm | max. 50 ml (1 test tube) | 2800 rpm (fixed) | lab dancer |
| | 4,5 mm | 0,1 kg | 1000 – 2800 rpm | VORTEX 1 |
| | 4 mm | 0,4 kg | 500 – 2500 rpm | VORTEX 2 |
| Suitable for mixing in test tubes, microcentrifuge tubes, reagent glasses / small vessels, and microtiter plates | 4 mm | 0,4 kg | 500 – 2500 rpm | VORTEX 3 |
| | 4 mm | 2 kg | 100 – 2200 rpm | VXR basic Vibrax® |
| | 3 mm | 2 or 4 microtiter plates | 50 – 1100 rpm | MTS 2/4 digital microtiter shaker |



Orbital

The platform moves in a circular orbit

| | | | | |
|---|-------|--------|--------------|--------------------------------|
| Ideal for unattended operation in a temperature-controlled environment | 20 mm | 20 kg | 10 – 500 rpm | KS 4000 i control ic control |
| | 20 mm | 7,5 kg | 10 – 500 rpm | KS 3000 i control ic control |
| Ideal for mixing in test tubes, microtiter plates, bottles, flasks and beakers. A wide range of attachment combinations allows for using almost all shapes and sizes of vessels | 4 mm | 2 kg | 80 – 800 rpm | KS 130 basic control |
| | 10 mm | 7,5 kg | 50 – 500 rpm | KS 260 basic |
| | 10 mm | 7,5 kg | 10 – 500 rpm | KS 260 control |
| | 30 mm | 15 kg | 0 – 300 rpm | KS 501 digital |



MATRIX Orbital



lab dancer



VORTEX 3



KS 3000 i control

How to find the right shaker

/// Your selection guide

| Application | Shaking diameter | Max. permissible shaking weight | Speed range | Recommended IKA device |
|--|--|---------------------------------|----------------|------------------------|
| Reciprocating The platform moves back and forth horizontally | | | | |
| Ideal for shaking out, eluting, extracting, gassing out, dissolving, enriching, etc. | 20 mm | 7,5 kg | 20 – 300 rpm | HS 260 basic |
| | 20 mm | 7,5 kg | 10 – 300 rpm | HS 260 control |
| | 30 mm | 15 kg | 0 – 300 rpm | HS 501 digital |
| Rocking (See-saw action) The platform rocks on a central pivot | | | | |
| Used for homogenous mixing in flasks, culture flasks, Petri dishes and tubes | 8° (angle) | 2 kg | 5 – 80 rpm | ROCKER 2D basic |
| | 0 – 15° (angle) | 2 kg | 5 – 80 rpm | ROCKER 2D digital |
| Rocking (3D Tumbling motion) The platform moves in a three-dimensional motion | | | | |
| Ideal for low foaming agitation, DNA extractions, staining and de-staining procedures, etc. | 8° (angle) | 2 kg | 30 rpm (fixed) | ROCKER 3D basic |
| | 0 – 15° (angle) | 2 kg | 0 – 80 rpm | ROCKER 3D digital |
| Rocking and Rolling The platform rocks on a central pivot as well as revolves around a fixed point | | | | |
| Recommended for mixing blood samples, viscous substances and liquid-solid suspensions where minimum aeration is required | 24,5 mm (high) | 2 kg | 30 rpm (fixed) | ROLLER 6 basic |
| | 24,5 mm (high) | 2 kg | 0 – 80 rpm | ROLLER 6 digital |
| | 24,5 mm (high) | 2 kg | 30 rpm (fixed) | ROLLER 10 basic |
| | 24,5 mm (high) | 2 kg | 0 – 80 rpm | ROLLER 10 digital |
| Rotating Platform revolves at a tilted angle | | | | |
| Ideal for keeping biological samples in suspension and for general mixing applications | Adjustable from horizontal to vertical | 2 kg | 20 rpm (fixed) | Loopster basic |
| | Adjustable from horizontal to vertical | 2 kg | 0 – 80 rpm | Loopster digital |
| | Vertical or horizontal | 2 kg | 20 rpm (fixed) | Trayster basic |
| | Vertical or horizontal | 2 kg | 0 – 80 rpm | Trayster digital |



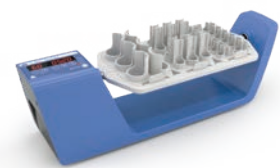
ROCKER 3D digital



ROLLER 6 digital



Loopster digital



Trayster digital

Shaker attachments and their vessel capacities

/// Recommendations for various vessel sizes

| IKA shaker | Attachment combination | 25 ml | 50 ml | 100 ml | 200 ml | 250 ml | 500 ml | 1000 ml | 2000 ml | 3000 ml | 5000 ml |
|--|--|-------|-------|--------|--------|--------|--------|---------|---------|---------|---------|
| ERLENMEYER FLASKS | | | | | | | | | | | |
| KS 130 basic KS 130 digital | STICKMAX | 25 | 16 | 9 | - | 5 | 4 | 2 | 1 | 1 | - |
| | AS 130.1 Universal attachment | 15 | 12 | 6 | - | 2 | 2 | 1 | 1 | 1 | - |
| | required clamping rolls for AS 130.1 | 4 | 4 | 3 | - | 2 | 2 | 2 | 2 | 2 | - |
| | AS 130.2 Fixing clip attachment | 12 | 12 | 9 | - | 4 | 4 | - | - | - | - |
| KS 260 basic KS 260 digital HS 260 basic HS 260 control | STICKMAX | 44 | 36 | 25 | - | 9 | 9 | 4 | 2 | 2 | 1 |
| | AS 260.1 Universal attachment | 28 | 24 | 15 | - | 6 | 6 | 2 | 1 | 1 | 1 |
| | required clamping rolls for AS 260.1 | 5 | 5 | 4 | - | 3 | 3 | 2 | 2 | 2 | 2 |
| | AS 260.2 Fixing clip attachment | 31 | 28 | 17 | - | 10 | 9 | 5 | 4 | - | - |
| KS 501 digital HS 501 digital | STICKMAX | 100 | 64 | 36 | - | 25 | 16 | 9 | 4 | 4 | 2 |
| | AS 501.1 Universal attachment | 70 | 48 | 30 | - | 20 | 12 | 9 | 4 | 4 | 1 |
| | required clamping rolls for AS 501.1 | 7 | 6 | 5 | - | 4 | 3 | 6 | 3 | 3 | 2 |
| | AS 501.4 Fixing clip support | 55 | 50 | 30 | - | 12 | 11 | 8 | 5 | - | - |
| KS 3000 i control KS 3000 ic control | STICKMAX | 44 | 36 | 25 | - | 9 | 9 | 4 | 2 | - | - |
| | AS 260.1 Universal attachment | 28 | 24 | 15 | - | 6 | 6 | 2 | - | - | - |
| | required clamping rolls for AS 260.1 | 5 | 5 | 4 | - | 3 | 3 | 2 | - | - | - |
| | AS 260.2 Fixing clip attachment | 31 | 28 | 17 | - | 10 | 9 | 5 | - | - | - |
| KS 4000 i control KS 4000 ic control | STICKMAX | 81 | 49 | 36 | - | 16 | 9 | 9 | 4 | 2 | - |
| | AS 4000.1 Universal attachment | 54 | 35 | 24 | - | 12 | 9 | 6 | 4 | 2 | - |
| | required clamping rolls for AS 4000.1 | 7 | 6 | 5 | - | 4 | 4 | 3 | 3 | 2 | - |
| | AS 4000.2 Fixing clip attachment | 55 | 52 | 25 | - | 16 | 11 | 7 | 4 | - | - |
| VOLUMETRIC FLASKS | | | | | | | | | | | |
| KS 130 basic KS 130 digital | STICKMAX | 25 | 16 | 9 | 6 | 6 | 4 | 2 | ** | - | - |
| | AS 130.1 Universal attachment | 20 | 12 | 6 | 6 | 2 | 2 | - | - | - | - |
| | required clamping rolls for AS 130.1 | 5 | 4 | 3 | 3 | 2 | 2 | - | - | - | - |
| | AS 130.2 Fixing clip attachment | 18 | 9 | 8 | 4 | 4 | 4 | - | - | - | - |
| KS 260 basic KS 260 digital HS 260 basic HS 260 control | STICKMAX | 49 | 36 | 25 | 16 | 9 | 9 | 4 | ** | - | - |
| | AS 260.1 Universal attachment | 32 | 24 | 15 | 8 | 8 | 6 | 2 | ** | - | - |
| | required clamping rolls for AS 260.1 | 5 | 5 | 4 | 3 | 3 | 4 | 2 | ** | - | - |
| | AS 260.2 Fixing clip attachment | 30 | 30 | 23 | 9 | 9 | 9 | 5 | 4 | - | - |
| KS 501 digital HS 501 digital | STICKMAX | 100 | 64 | 36 | 25 | 16 | 9 | 9 | ** | - | - |
| | AS 501.1 Universal attachment + 10 AS 1.11 Clamping roll + 20 AS 1.6 Clamping device | 70 | 48 | 30 | 20 | 20 | 12 | 9 | ** | - | - |
| | required clamping rolls for AS 501.1 | 7 | 6 | 5 | 4 | 4 | 3 | 3 | ** | - | - |
| | AS 501.2 Separating funnel attachment | 55 | 54 | 35 | 19 | 19 | 11 | 8 | 5 | - | - |
| KS 3000 i control KS 3000 ic control | STICKMAX | 49 | 36 | 25 | 16 | 9 | 6 | - | - | - | - |
| | AS 260.1 Universal attachment | 32 | 24 | 15 | 8 | 8 | 6 | - | - | - | - |
| | required clamping rolls for AS 260.1 | 5 | 5 | 4 | 3 | 3 | 4 | - | - | - | - |
| | AS 260.2 Fixing clip attachment | 30 | 30 | 23 | 9 | 9 | 5 | - | - | - | - |
| KS 4000 i control KS 4000 ic control | STICKMAX | 100 | 64 | 36 | 25 | 25 | 16 | 6 | - | - | - |
| | AS 4000.1 Universal attachment | 60 | 40 | 24 | 20 | 15 | 12 | 6 | - | - | - |
| | required clamping rolls for AS 4000.1 | 7 | 6 | 5 | 5 | 5 | 6 | 4 | - | - | - |
| | AS 4000.2 Fixing clip attachment | 55 | 55 | 32 | 21 | 21 | 12 | 5 | - | - | - |

Subject to technical changes

* Limited recommendation! ** Not recommended! *** 4 = only up; 10 = up + down



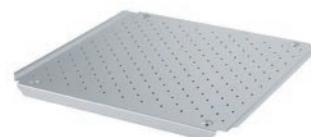
AS 130.2



AS 260.2



AS 501.4



AS 4000.2

Shaker attachments and their vessel capacities

/// Recommendations for various vessel sizes

| IKA shaker | Attachment combination | 25 ml | 50 ml | 100 ml | 150 ml | 250 ml | 400 ml | 600 ml | 800 ml | 1000 ml | 2000 ml | 3000 ml | 5000 ml | 10 000 ml |
|--|---|-------|-------|--------|--------|--------|--------|--------|--------|---------|---------|---------|---------|-----------|
| BEAKERS (HIGH FORM) | | | | | | | | | | | | | | |
| KS 130 basic KS 130 digital | STICKMAX | 36 | 16 | 9 | 9 | 9 | 5 | 4 | 4 | 4 | 1 | 1 | - | - |
| | AS 130.1 Universal attachment required clamping rolls for AS 130.1 | 18 | 15 | 8 | 6 | 6 | 4 | 2 | 2 | 2 | 1 | 1 | - | - |
| KS 260 basic KS 260 digital HS 260 basic HS 260 control | STICKMAX | 81 | 49 | 25 | 25 | 16 | 16 | 9 | 9 | 9 | 4 | 4 | - | - |
| | AS 260.1 Universal attachment required clamping rolls for AS 260.1 | 45 | 28 | 18 | 15 | 15 | 8 | 6 | 6 | 6 | 2 | 2 | - | - |
| KS 501 digital HS 501 digital | STICKMAX | 121 | 81 | 49 | 36 | 36 | 25 | 16 | 16 | 9 | 9 | 4 | - | - |
| | AS 501.1 Universal attachment required clamping rolls for AS 501.1 | 96 | 63 | 42 | 36 | 30 | 25 | 16 | 12 | 12 | 9 | 4 | - | - |
| KS 3000 i control KS 3000 ic control | STICKMAX | 81 | 49 | 25 | 25 | 25 | 16 | 9 | 9 | 9 | 4 | - | - | - |
| | AS 260.1 Universal attachment required clamping rolls for AS 260.1 | 45 | 28 | 18 | 15 | 15 | 8 | 6 | 6 | 6 | 2 | - | - | - |
| KS 4000 i control KS 4000 ic control | STICKMAX | 121 | 81 | 49 | 36 | 36 | 25 | 16 | 16 | 9 | 9 | 4 | - | - |
| | AS 4000.1 Universal attachment required clamping rolls for AS 4000.1 | 84 | 48 | 35 | 24 | 20 | 20 | 12 | 12 | 12 | 6 | 4 | - | - |
| BEAKERS (LOW FORM) | | | | | | | | | | | | | | |
| KS 130 basic KS 130 digital | STICKMAX | 25 | 16 | 9 | 9 | 5 | 4 | 4 | 4 | 4 | 1 | 1* | 1* | ** |
| | AS 130.1 Universal attachment required clamping rolls for AS 130.1 | 15 | 8 | 8 | 6 | 3 | 2 | 2 | 2 | 2 | 1 | 1* | - | - |
| KS 260 basic KS 260 digital HS 260 basic HS 260 control | STICKMAX | 64 | 49 | 25 | 25 | 16 | 9 | 9 | 5 | 5 | 4 | 2 | 1 | 1* |
| | AS 260.1 Universal attachment required clamping rolls for AS 260.1 | 32 | 24 | 15 | 12 | 8 | 6 | 6 | 6 | 4 | 2 | 2 | 1 | 1* |
| KS 501 digital HS 501 digital | STICKMAX | 100 | 64 | 49 | 36 | 25 | 16 | 16 | 9 | 9 | 9 | 4 | 4 | 1 |
| | AS 501.1 Universal attachment required clamping rolls for AS 501.1 | 70 | 48 | 42 | 30 | 20 | 16 | 12 | 12 | 9 | 6 | 4 | 1 | 1 |
| KS 3000 i control KS 3000 ic control | STICKMAX | 64 | 49 | 25 | 25 | 16 | 9 | 9 | 5 | 5 | 4 | - | - | - |
| | AS 260.1 Universal attachment required clamping rolls for AS 260.1 | 32 | 24 | 15 | 12 | 8 | 6 | 6 | 4 | 4 | 2 | 2 | - | - |
| KS 4000 i control KS 4000 ic control | STICKMAX | 100 | 64 | 49 | 36 | 25 | 16 | 16 | 10 | 10 | 9 | 4 | 2 | - |
| | AS 4000.1 Universal attachment required clamping rolls for AS 4000.1 | 66 | 40 | 35 | 20 | 20 | 12 | 12 | 9 | 6 | 4 | 4 | 2 | - |

Subject to technical changes

* Limited recommendation! ** Not recommended! + recommended!



AS 130.1



AS 260.1



AS 501.1



AS 4000.1

ООО «Диаэм»

Москва
ул. Магаданская, д. 7, к. 3 ■ тел./факс: (495) 745-0508 ■ sales@dia-m.ru

www.dia-m.ru

С.-Петербург
+7 (812) 372-6040
spb@dia-m.ru

Новосибирск
+7 (383) 328-0048
nsk@dia-m.ru

Воронеж
+7 (473) 232-4412
vrn@dia-m.ru

Йошкар-Ола
+7 (927) 880-3676
nba@dia-m.ru

Красноярск
+7 (923) 303-0152
krsk@dia-m.ru

Казань
+7 (843) 210-2080
kazan@dia-m.ru

Ростов-на-Дону
+7 (863) 303-5500
rnd@dia-m.ru

Екатеринбург
+7 (912) 658-7606
ekb@dia-m.ru

Кемерово
+7 (923) 158-6753
kemerovo@dia-m.ru

Армения
+7 (094) 01-0173
armenia@dia-m.ru

