

ΔΙΑ•М
современная лаборатория

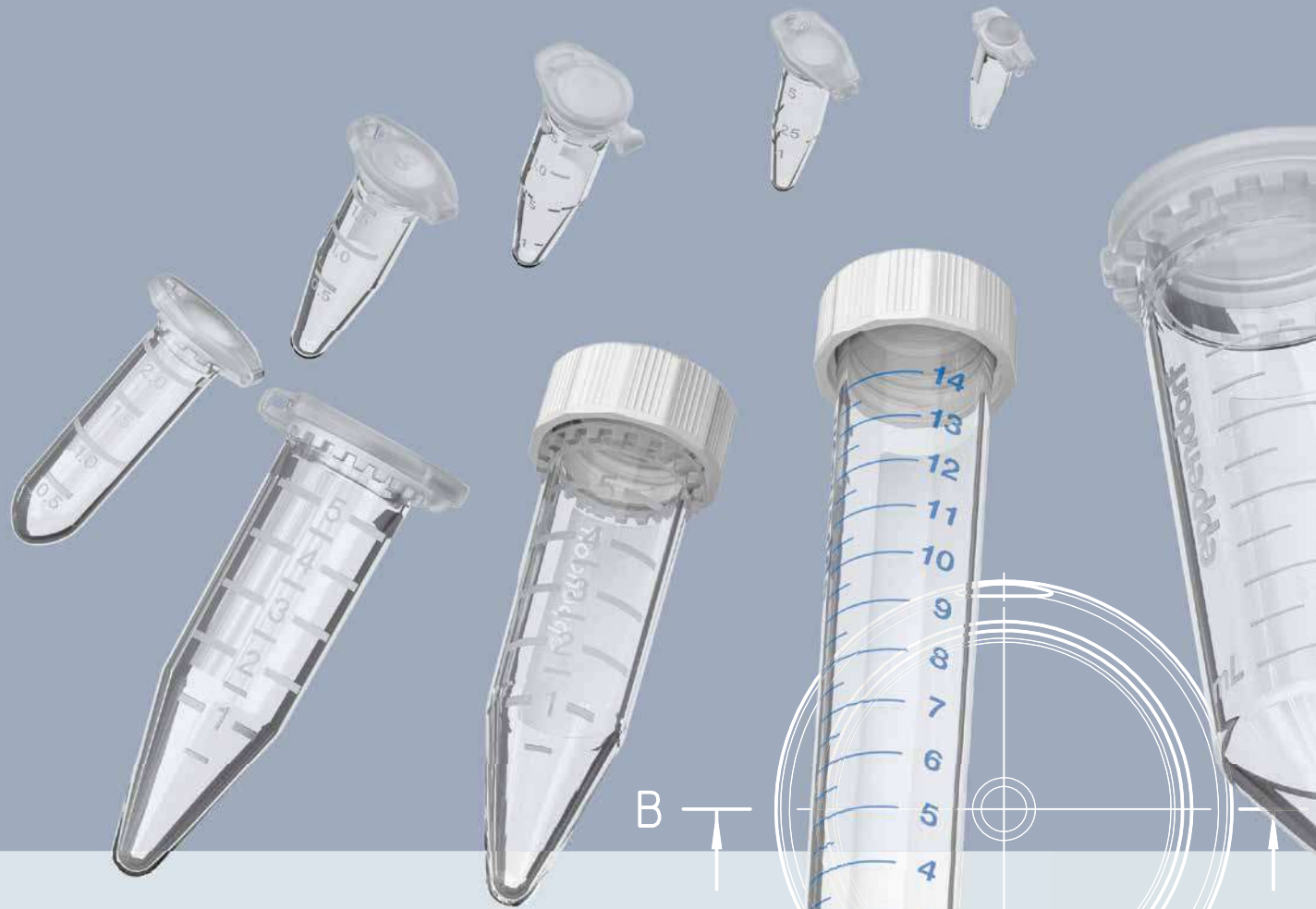
www.dia-m.ru
диагностика

eppendorf



Absolute Tubes

Your best choice to care for your sample:
Eppendorf Tubes®



It's Your Sample

Disposable plasticware is used routinely in most life science laboratories. To achieve highest reliability and consistency for your experiments, Eppendorf has optimized materials and processes for the production of Eppendorf Tubes to minimize the risk of interference. Especially chemical substances such as slip agents, plasticizers or biocides, leaching out of plastic consumables, are still frequently underestimated in the majority of life science applications. However, increasing scientific evidence shows that this heterogeneous group of chemicals may significantly affect experiments and pose a likely source of error in various assay systems. They slow down evaporation, skew absorbance readings and lead to erroneous DNA quantification. Some of these slip agents have also been shown to negatively affect the outcome of biological tests like enzyme activity or receptor-binding assays.



Eppendorf Tubes®

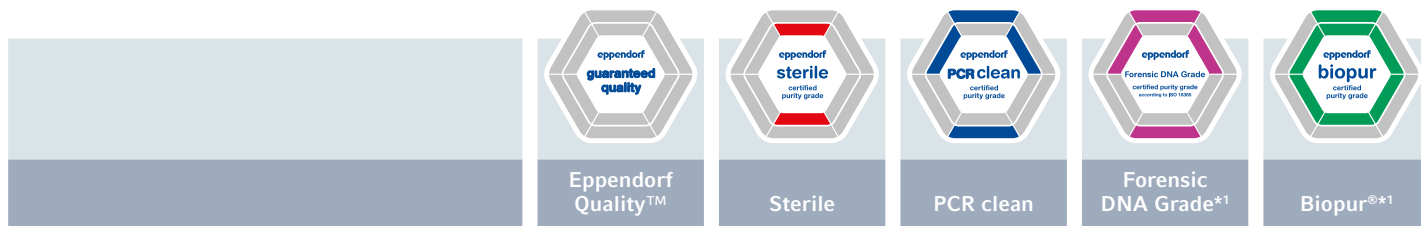
- > Made of highest quality, virgin polypropylene (PP) free of biocides, plasticizers and latex
- > Produced with optimized, highly polished molds without the use of slip agents like oleamide, erucamide, stearamide
- > Produced with dyes free of organic additives and heavy metals
- > Designed and manufactured under ISO 13485 and ISO 9001 certified Management System
- > Full traceability is provided for for each product back to material lot

Purity tailored to your applicational needs

Eppendorf has set standards in consumable purity levels. Along with the high standard of the Eppendorf Quality™, four additional purity grades tailor Eppendorf Tubes to various applicational needs – Sterile (incl. pyrogen-free, RNase-free, DNase-free, human and bacterial DNA-free), PCR clean, Forensic DNA Grade and Biopur®. Tubes with these purity grades are tested by an independent, external laboratory for compliance. The lot-specific certificates issued by this laboratory may be downloaded at www.eppendorf.com/certificates



Eppendorf Purity Grades Selection Guide for Tubes



Continuous quality control for the following relevant criteria

	Eppendorf Quality™	Sterile	PCR clean	Forensic DNA Grade*1	Biopur®*1
Function, tightness, precision	■	■	■	■	■
Low wetting	■	■	■	■	■
High chemical resistance	■	■	■	■	■
High thermal resistance	■	■	■	■	■
High centrifugation stability*2	■	■	■	■	■
High transparency	■	■	■	■	■
Precisely shaped	■	■	■	■	■

Lot-specific certified for the following purity criteria

	Eppendorf Quality™	Sterile	PCR clean	Forensic DNA Grade*1	Biopur®*1
Human DNA-free			■	■	■
DNA-free (human + bacterial DNA)					■
DNase-free			■	■	■
RNase-free			■	■	■
PCR inhibitor-free			■	■	■
ATP-free					■
Pyrogen-free (endotoxin-free)		■			■
Sterile (Ph.Eur./USP)		■			■

Methods (Examples)

	Eppendorf Quality™	Sterile	PCR clean	Forensic DNA Grade*1	Biopur®*1
Applications requiring high general quality, but no checked special purities	■				
Bacterial and yeast cultures		■			■
Cell and tissue culture		■			■ ■
Isolation and storage of DNA			■ ■	■ ■	■
Isolation and storage of RNA			■	■	■ ■
DNA analysis (PCR, restriction analysis, hybridization, sequencing, NGS)			■ ■	■ ■	■
Mitochondrial DNA analysis				■ ■	■ ■
Bacterial DNA analysis					■ ■
RNA analysis				■	■ ■

Eppendorf Tubes®

	Eppendorf Quality™	Sterile	PCR clean	Forensic DNA Grade*1	Biopur®*1
Safe-Lock Tubes	■		■	■	■*1
3810X	■		■		
Eppendorf Tubes® 5.0 mL	■	■	■	■	■*1
Conical Tubes 15 mL and 50 mL		■*3		■*1	
Conical Tubes 25 mL	■	■*3	■		
DNA and Protein LoBind Tubes			■		
PCR Tubes (PCR + real-time PCR)			■	■	
Cap Strips (PCR + real-time PCR)			■	■	

■ Recommended ■ ■ Highly recommended

*1 Increased safety due to availability of individually packaged / single-blistered products.

*2 For accurate details regarding resistance to centrifugation, please refer to the individual instructions for use of the product.

*3 Sterile, pyrogen-, DNase-, RNase-, human and bacterial DNA-free.

Eppendorf Tubes® 3810X – The Original

Customer benefits

- > Functionality is guaranteed from -86 °C to 100 °C
- > Simple verification of the pipetted volume by clear graduation
- > All variants can be autoclaved for subsequent use in sterile environments (121 °C, 20 min.)
- > Manufactured without the use of slip agents, plasticizers and biocides
- > High resistance to chemicals, mechanical stress and temperature extremes – manufactured from virgin polypropylene
- > Tube lid is easy to open and close for ergonomic handling
- > Easy labeling on frosted lid and surface on the side
- > Available in Eppendorf Quality and PCR clean purity grade
- > Batch-specific purity certificates available for PCR clean at www.eppendorf.com/certificates

This is the successor to the renowned first microcentrifuge tube 3810 from Eppendorf. The idea of manufacturing a 1.5 mL plastic test tube was born out of the necessity to introduce an appropriate container into the automatic clinical analyzers developed by Eppendorf in 1962. The tried and tested design with invaluable features shows perfect sealing qualities, excellent chemical stability and optimal construction materials for resisting the demands of centrifugal forces. As they are easy to open and close securely, Eppendorf Tubes 3810X offer comfort and dependability for sample preparation, centrifugation and storage. One vessel for all applications in molecular biology, chemistry and biochemistry – safer than ever, Eppendorf Tubes 3810X can be centrifuged up to 30,000 x *g* without any problems!



The 3810X tube guarantees tried and tested tight lid closure and easy, stress-free opening and closing.



Safe-Lock Tubes – A Name Tells Its Story

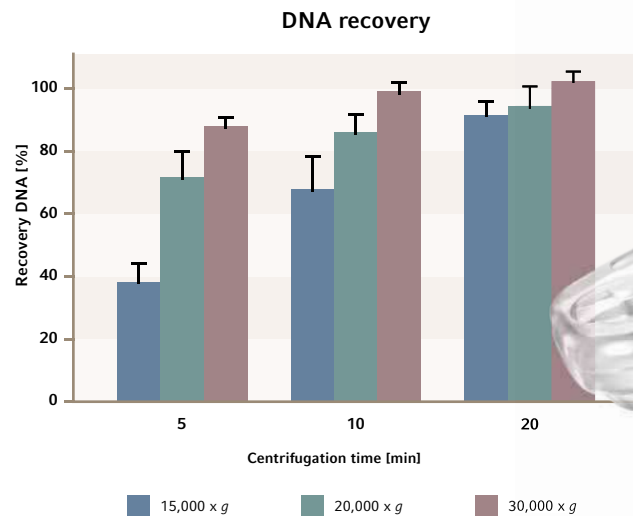
The original Eppendorf Safe-Lock lid

How can you recognize Eppendorf Safe-Lock Tubes – the original »Eppi«? One unmistakable feature of our tubes is the »ep« on the lid surrounded by our embossed brand name »Eppendorf«.



Outstanding application performance

Safer than ever. Tests at 30,000 x g have shown that vessels can break during centrifugation but not Eppendorf Safe-Lock Tubes, the well-known »Eppis®«. Depending on the variant, the Safe-Lock Tubes are guaranteed to withstand forces up to 30,000 x g, allowing you to safely centrifuge without sample loss.



It has been proven that centrifugation at 30,000 x g in plasmid DNA precipitation allows better recovery rates and shorter centrifugation times. Using the Eppendorf 30,000 x g system comprising Safe-Lock Tubes and Centrifuge 5430 R with high-speed rotor, the effect of relative centrifugal force (rcf), duration of centrifugation and the amount of isopropanol on the recovery rate of plasmid DNA from alcohol precipitation were investigated. All three factors play a role, with rcf having the greatest effect. At 30,000 x g, nearly 90% of the DNA could be recovered from a 5 minute centrifugation.



Eppi® 0.5, 1.5 and 2.0 mL – Unrivaled for Decades



Eppendorf Safe-Lock Tubes in 0.5 mL, 1.5 mL and 2.0 mL volumes combine all our experience from decades of constant optimization and development. The original Safe-Lock Tubes protect your sample with excellent centrifugation stability, feature perfect sealing properties and reliably prevent sample evaporation. The hinged lid on Safe-Lock Tubes avoids any danger of leaks even under extreme conditions and the lid hook prevents the tube from opening. High safety is ensured when working with expensive or toxic samples, or with radioactive substances.

Customer benefits

- > Hinged Eppendorf Safe-Lock lid prevents unintentional lid opening during incubation and storage
- > High resistance to chemicals, mechanical stress and temperature extremes – manufactured from virgin polypropylene
- > Manufactured without the use of slip agents, plasticizers and biocides
- > *g*-Safe® for exceptional centrifugation stability up to 30,000 × *g* to prevent sample loss due to tube breakage and to provide extra safety when working with hazardous samples
- > Minimal evaporation rates during long-term storage through precise lid sealing
- > Easy labeling on frosted lid and surface on the side
- > Functionality is guaranteed from -86 °C to 100 °C
- > Autoclavability is given for all variants for use in sterile environment (121 °C, 20 min.)
- > All volumes available in Eppendorf Quality and PCR clean, Eppendorf Forensic DNA Grade, Biopur
- > Batch-specific purity certificates available for PCR clean, Eppendorf Forensic DNA Grade and Biopur on www.eppendorf.com/certificates
- > Maximum sample recovery with Safe-Lock Tubes in Eppendorf Protein LoBind and DNA LoBind
- > Protection of light-sensitive samples is provided by amber colored Safe-Lock Tubes

1.5 mL
color variants

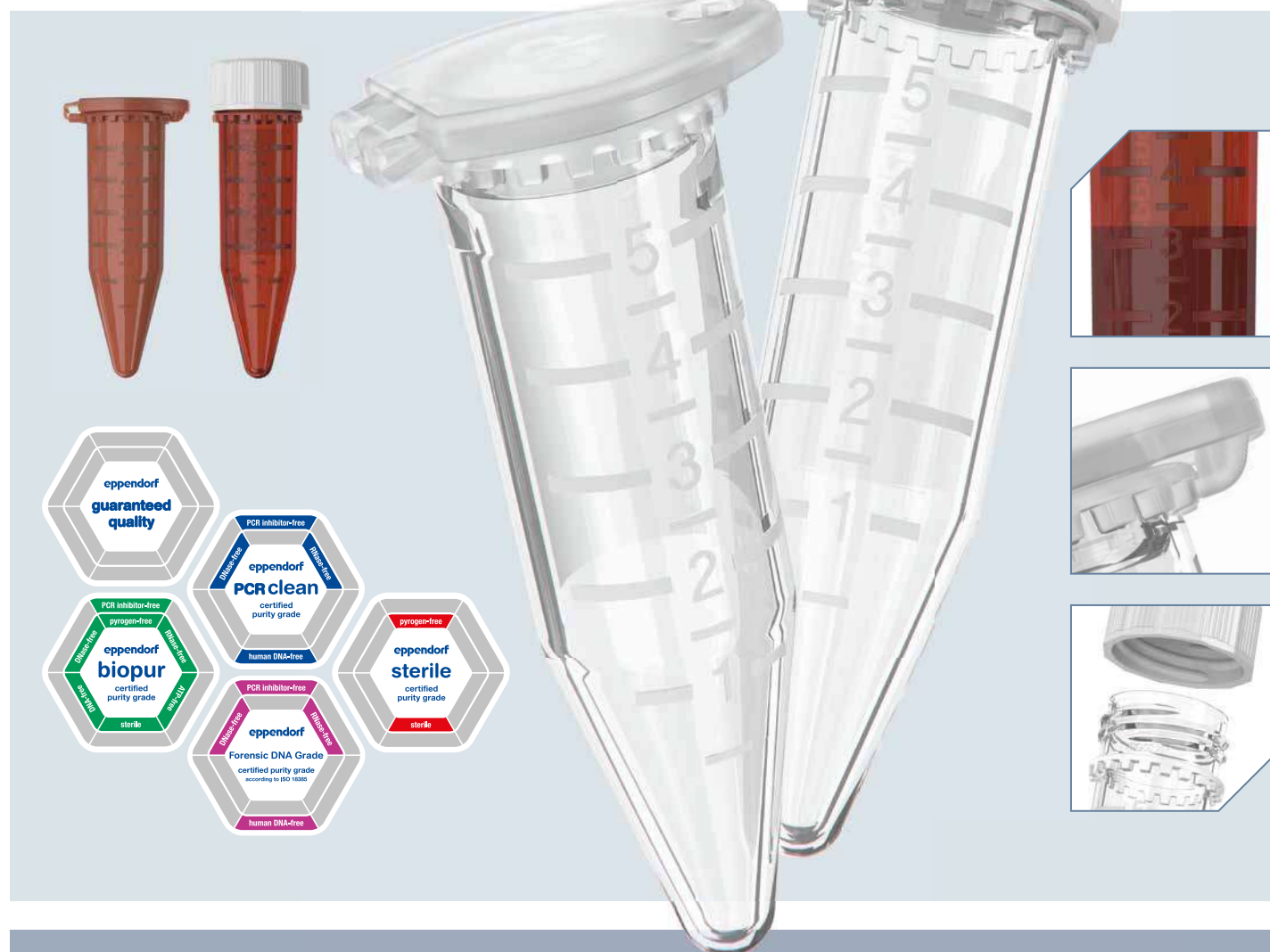


The Missing Link – Eppendorf Tubes® 5.0 mL

In 2013, Eppendorf once again set a standard in laboratories. The launch of the 5.0 mL Eppendorf Tube offered the solution to a problem customers faced when working in volumes of more than 2.0 mL but up to a maximum of 5.0 mL. Conical tubes of e.g. 15 mL were available for large volumes but whenever the customer wanted to handle medium sample volumes, he faced an issue: a comparably small volume of sample needed to be processed with unnecessarily large

tube formats – impractical, inconvenient and often prone to contamination. The 5.0 mL tube is the missing link between existing tube versions and it allows easy and safe processing of sample volumes up to 5.0 mL. The availability of snap cap and screw cap formats enables the optimal choice for different requirements in sample preparation, incubation, storage, or other applications.

Intelligent and Simple – Systematically!



> QR Code for Application Note 262 »Increased yield with isolation of a low-copy plasmid using Eppendorf Tubes® 5.0 mL compared to the 1.5 mL and 2.0 mL formats«
 > Find more Application Notes on www.eppendorf.com/5mL

A Full System of Components

Comprehensive line of accessories

The 5.0 mL system concept represents a complete solution for laboratory workflows. It comprises a wide range of matching accessories. Efficient and simple pipetting, gentle mixing, incubating, safe centrifugation, automatic pipetting and storage: all work perfectly with Eppendorf Tubes 5.0 mL. The tube's conical shape is designed to be compatible with most accessories for common conical 15 mL tubes. This allows you to continue using many of your existing adapters and racks!

Customer benefits

- > Makes processing of samples up to 5.0 mL significantly easier
- > Significantly lower risk of contamination with easier sample access
- > Less storage space needed
- > Storage of samples and liquid solutions in volumes up to 5 mL
- > Matching accessories for centrifugation, mixing and heating, automation, sample preparation and storage available for immediate use
- > **Eppendorf Protein and DNA LoBind material for maximum recovery New!**
- > **Amber for UV light sensitive samples New!**
- > Available with snap cap and screw cap
- > Available in Eppendorf Quality, Sterile, PCR clean, Biopur, Eppendorf Forensic DNA Grade



Centrifugation

Centrifuge 5920 R:

Rotor S-4xUniversal-Large for 96 x 5.0 mL tubes, up to 4,402 x g

Centrifuge 5910 R:

Rotor S-4xUniversal with universal adapter for 68 x 5.0 mL tubes, up to 4,324 x g



Centrifuges with rotors for 15 mL conical tubes with screw cap:

universal adapter 8 pcs. for 8 x 5.0 mL tubes



Heating and Mixing

Eppendorf ThermoMixer® C and Eppendorf ThermoStat™ C:

Eppendorf SmartBlock™ for 8 x 5.0 mL tubes



MixMate®:

Tube Holder 5/15 mL, for 8 x 5/15 mL conical tubes



Sample Storage

Tube Rack 5/15 mL:

for 12 tubes



Tube Clip 5.0 mL:

to fix the tube lid in temperature applications from 80 °C up to 100 °C



Storage box made of polypropylene:

for 25 x 5.0 mL tubes



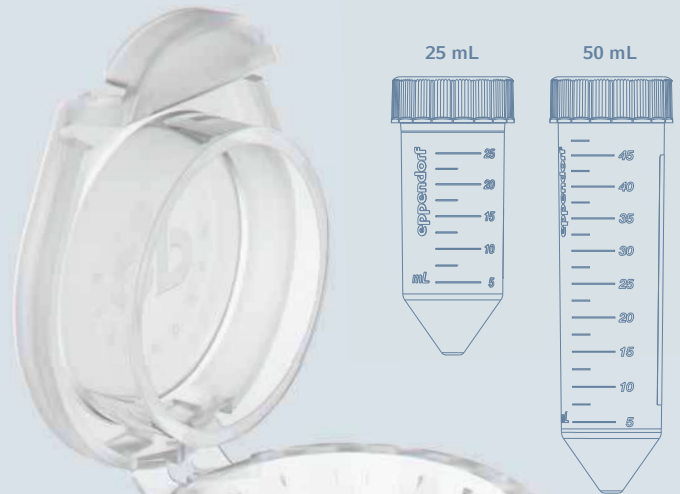
> More information about 5.0 mL tubes?
Click or scan to follow: www.eppendorf.com



The Next Level – Eppendorf Conical Tubes 25 mL

Very often sample volumes higher than 15 mL but much lower than 50 mL need to be prepared, centrifuged, mixed or stored.

As a result of this, we at Eppendorf have developed the new Eppendorf Conical Tubes 25 mL. This new member of the big Eppendorf Tube Family fills the gap between the volumes of traditional conical tubes of 15 mL and 50 mL. The 25 mL conical tube has the same diameter as the 50 mL conical tube but is not as long. Thus, the insertion depth of pipettes into the tube is much lower compared to a 50 mL conical tube. The new 25 mL tube is available with screw cap and also with an innovative SnapTec™ cap. This patented lid solution represents a unique snap cap solution within the conical tubes segment.



Customer benefits

- > Easy sample access also with low volume pipettes and tips without risk of cross-contamination
- > Centrifugation stability up to $17,000 \times g$ * for both tube variants – SnapTec cap and screw cap
- > Single-handed opening and closing of SnapTec cap version for fast liquid extraction or addition
- > Less storage space needed
- > Ensures tightness of seal from -86 °C up to 100 °C *
- > Matching accessories for centrifugation, mixing and heating, automation, sample preparation and storage available for immediate use
- > The SnapTec tube is autoclavable *

* Please note the instructions for use for details (www.eppendorf.com/manuals):
"Eppendorf Conical Tubes 25 mL, snap cap" and "Eppendorf Conical Tubes 15, 25 and 50 mL"



A Full System of Components



Improved sample processing

Greater diameter and lower height than 15 mL conical tubes enable better sample access and faster resuspension of pellets after centrifugation.



Single-handed operation

Supports optimized and faster handling of sample solutions, especially in multi-step protocols



Centrifugation

Centrifugation up to 17,000 x g * with rotors for 50 mL conical tubes, e.g. 59xx series and 58xx series:

Two adapter variants for snap cap and screw cap 25 mL tubes enable usage in 50 mL rotors and buckets



Heating and Mixing

Eppendorf ThermoMixer C and Eppendorf ThermoStat C:

Adapter for 25 mL tubes ensures compatibility with Eppendorf SmartBlock 50 mL



MixMate:

Tube Holder 25/50 mL, for 4 x 25/50 mL conical tubes



Sample Storage

Single Tube Stand:

Ideally suited for weighing samples on the balance and for handling individual samples. The viewing slit enables observation of the filling level at any time.



Tube Rack 25 mL:

Eppendorf Racks for 50 mL conical tubes can be used with the new 25 mL tubes



Storage box made of polypropylene:

Lower height allows space-saving storage for up to 9 x 25 mL tubes in 3.5 inches Eppendorf Storage Boxes



> More information about 25 mL tubes?

Click or scan to follow:
www.eppendorf.com/25mL



Eppendorf Conical Tubes 15 mL and 50 mL

Conical tubes with screw caps belong to the most commonly used laboratory vessel formats and are universally used in a variety of laboratory procedures. Typical applications include setting up, handling, storage and transport of various samples and reagents, centrifugation and mixing, various incubations, cell culture and many others. Typically, they have to withstand a great variety of conditions and provide good integrity and sample/user safety.

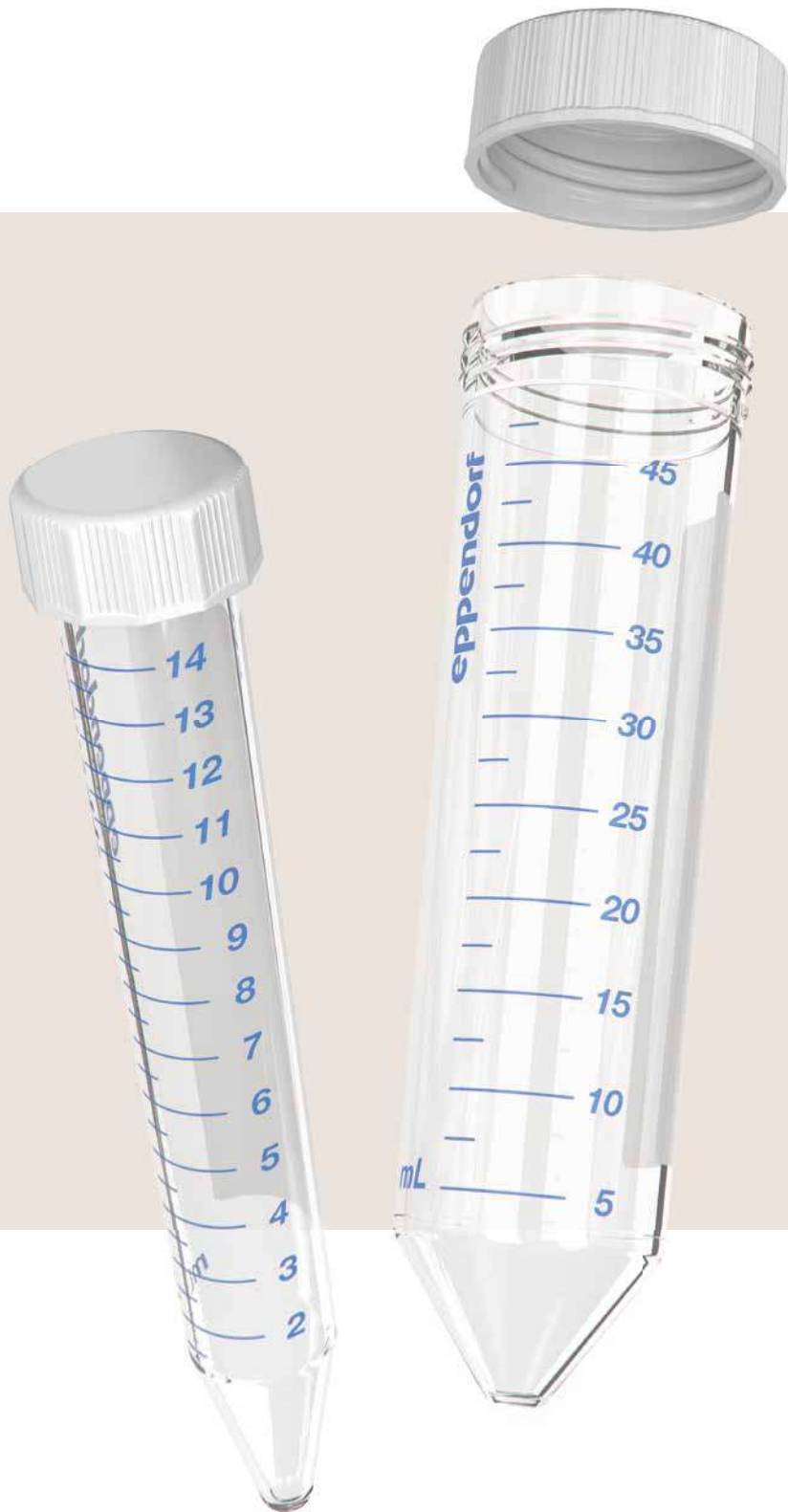
The Eppendorf Conical Tubes 15 mL and 50 mL provide the highest combined performance on centrifugation stability and screw cap tightness. Both tubes show minimal levels of leachables making them ideal vessels for a wide array of demanding applications.

The availability of different purity grades enables you to further minimize the risk of contamination. Both 15 and 50 mL conical tubes are also available as Protein LoBind and DNA LoBind. Protein LoBind prevents unspecific adsorption of protein molecules or peptides to polymer surfaces. DNA LoBind maximizes sample recovery of nucleic acids by significantly reducing sample-to-surface binding.

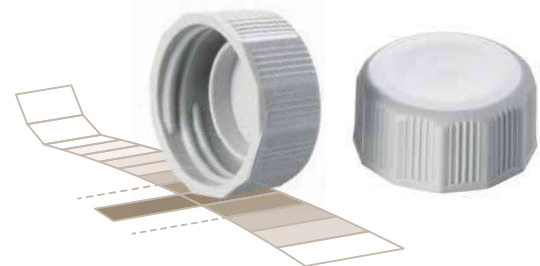
With amber colored Eppendorf Conical Tubes 15 mL/ 50 mL, effective protection of light-sensitive samples is combined with a high degree of transparency. This provides you with full control over the insertion depth of your pipette tip.



> QR Code for Application Note 343 – »Performance comparison of Eppendorf Conical Tubes: cap tightness, centrifugation stability and leachable levels«.
 > Read more: www.eppendorf.com/Conical-Tubes



- > Precise dimensions enable maximum compatibility with centrifuge rotors, mixers and shakers
- > Reliable and safe labeling thanks to a large writing area on the tube and a flat, light-colored cap
- > Premium raw material and no use of slip agents, plasticizers, and biocides during manufacturing ensure
 - Highest sample integrity
 - High *g*-Safe centrifugation stability up to 19,500 x *g*
 - Optimal sample and pellet visibility
 - Lot specific purity certificates are available



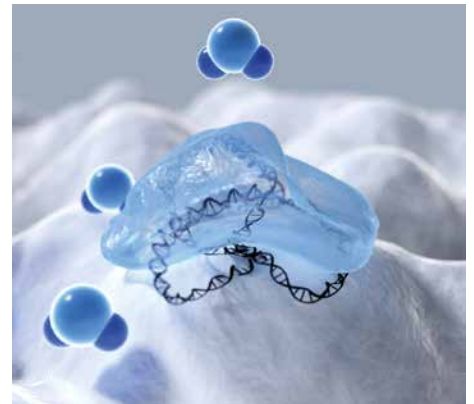
Cap with flattened and grooved sides

- > Supports user-friendly ergonomic handling
- > Enables stable and upright positioning
- > Minimizes contamination risk



DNA LoBind – Recover Your Nucleic Acids

When dealing with low concentrations of nucleic acids, sample adsorption to inner surfaces of vessels cannot be ignored. For example, in workflows including preparation and setup of PCR applications, loss of DNA on vessel surfaces can affect the performance of individual processing steps and can lead to misinterpretation of results. DNA LoBind Tubes maximize sample recovery of nucleic acids by significantly reducing sample-to-surface binding. They represent the ideal solution for preparing and storing samples containing low amounts of DNA. To minimize the risk of sample interference, the DNA LoBind properties are achieved without surface coating.



Applications

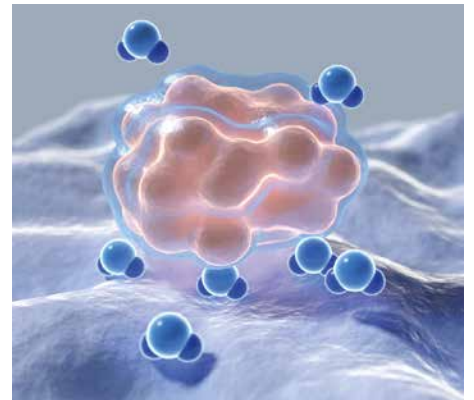
- > Preparation or storage of DNA and RNA samples
- > Forensic trace analysis
- > Preparing dilution series in quantitative qPCR
- > Sample preparation in next-generation sequencing
- > Creation of genomic or oligonucleotide libraries



All LoBind Tubes by Eppendorf are free of surface coating (e.g. silicone) to minimize the risk of sample interference.

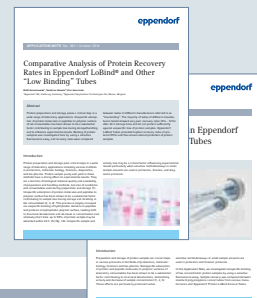
Protein LoBind – Get the Most Out of Your Applications

Protein preparation and storage represent critical steps in a wide range of laboratory applications. Unspecific adsorption of up to 90% of protein molecules or peptides to the polymer surface of the inner walls of tubes can significantly contribute to sample loss within 24 hours and artificially affect experimental results. Eppendorf Protein LoBind Tubes are specifically designed for use in applications where protein concentrations tend to be small and sample recovery is vital for assay results. A special, two-component polymer mix creates a hydrophilic surface that guarantees optimal recovery rates of valuable samples.



Applications

- > Preparation or storage of protein, peptide or antibody samples
- > Enzymatic assays – the hydrophilic surface reduces denaturation when the enzyme comes into contact with the tube inner wall
- > Prevention of sample loss during storage of virus stock solutions
- > Storage of cell suspensions
- > Sample preparation in toxicology



> Application Notes 382 – »Comparative Analysis of Protein Recovery Rates in Eppendorf LoBind® and other ›Low Binding‹ Tubes«

> Application Note 404 – »Total Sample Recovery in Eppendorf Protein LoBind Conical Tubes«

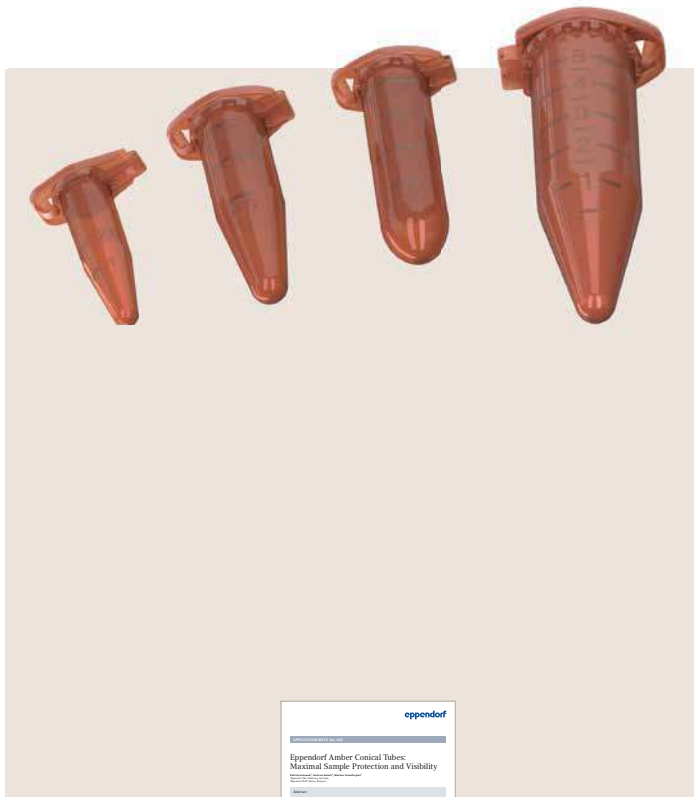


Effective Light Protection in Amber Tubes

Numerous types of light-sensitive reagents and samples are often used in the laboratory routine. Once exposed to light, their life-time or activity may rapidly decrease and therefore adversely affect subsequent assays and experiments. To avoid those difficulties, light-sensitive reagents and samples must be handled and stored in a manner that protects them from direct light exposure. Amber-colored laboratory plastic tubes reduce or completely block light transmission, and thus allow safe storage and handling of light-sensitive samples.

Light protection meets transparency

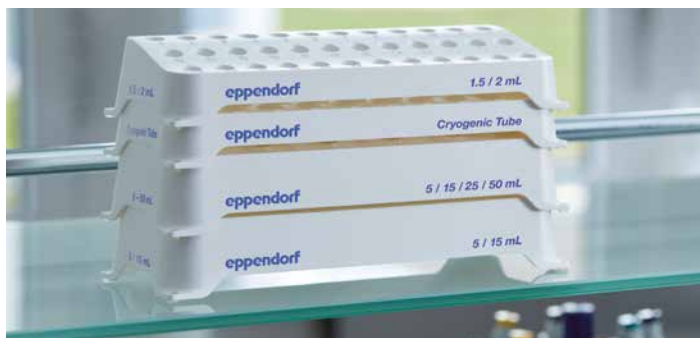
While providing good sample protection against energy-rich light in the short wavelength UV/VIS spectrum, these tubes often come with a major drawback: They are opaque and therefore do not allow optimal sample visibility. Specifically for our 5 mL screw cap tubes and our conical tubes 15 mL and 50 mL we developed our amber material with an optimized degree of transparency to offer full control over the insertion depths of pipette tips and thus provide a clear advantage regarding sample visibility, handling and prevention of contamination.



> Application Note No. 403 – »Eppendorf Amber Conical Tubes: Maximal Sample Protection and Visibility«



Well Organized with Eppendorf Tube Racks



Optimize your workflows through user-friendly handling of clearly arranged samples. Almost all laboratory protocols require efficient and reliable processing, transport, and short term storage of sample vessels in benchtop racks. The new Eppendorf Tube and Cuvette Racks combine optimized functionality and high robustness with an attractive design. Six different formats offer the optimal solution and perfect fit for all tubes and cuvettes commonly used in laboratories.

Compact dimensions require minimal space.

Customer benefits

- > All racks are stackable to save lab space when not in use
- > Silicone buttons ensure a safe stand
- > Made from high quality polypropylene (PP):
 - Ensuring dimensional stability across a broad temperature range (-86 °C to 121 °C)
 - Providing chemical resistance
- > The racks are laboratory washer-safe for fast and easy cleaning
- > The racks are autoclavable (121 °C/ 20 min) and thus suitable for workflows requiring a sterile environment, e.g. cell handling applications



Our System Solution for Sample Storage

The comprehensive modular concept of Eppendorf Storage Boxes for tubes from 0.5 mL to 50 mL allows selection of the optimal box combination for individual storage demands. The outer footprint dimensions of 133 mm (5.24 inches) are

compatible with common freezer rack systems. The different inner grid variants provide for a perfect fit to all typical tube formats: cryogenic tubes, microcentrifuge tubes, conical tubes, and other laboratory vessels.

Flexibility

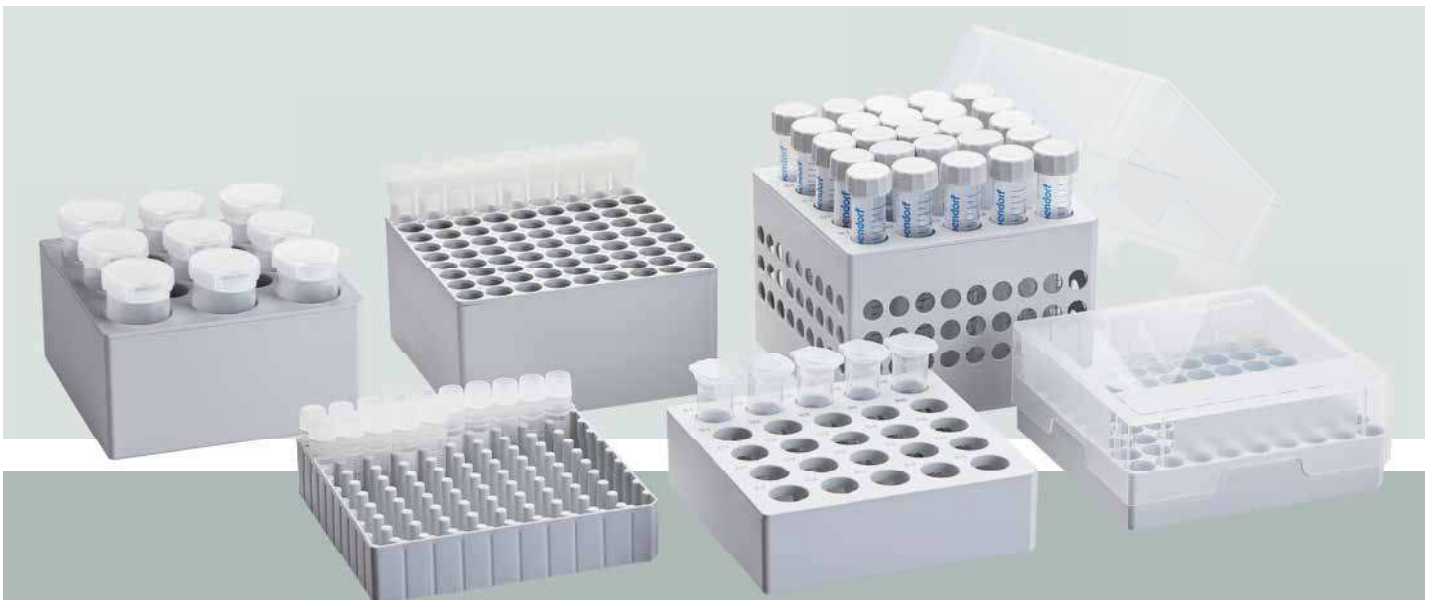
- > Space saving dimensions take full advantage of freezer space. Flexible combination options for different box formats optimize storage and archiving of samples
- > Boxes retain their shape during freezing to -86°C or autoclaving for 20 minutes at 121°C for sterilization

Ease of use

- > Sample can easily be identified thanks to individual alpha-numeric laser labeled code assigned to each sample location
- > Easy readability through high contrast of dark codes on light-grey surface
- > Long lifetime of permanent labeling
- > 5 additional inscription labels enable user-specific labeling
- > Easy and fast sample inspection through transparent lids
- > Smooth opening and closing for low ergonomic stress

Safety

- > Eppendorf conical tube boxes for 15 mL and 50 mL ensure an evenly distributed freezing process through ventilation slots on box sides. Thus tube damage and breakage is prevented.



Eppendorf PCR Tubes

Original Eppendorf PCR tubes are manufactured according to the highest Eppendorf quality standards. These thin-walled polypropylene tubes ensure efficient and homogeneous heat transfer. They are easy to open, but provide tight sealing to

prevent evaporation during PCR. Efficient heat transfer to the sample is ensured, thanks to their thin, even wall thickness and smooth wall surface.



Eppendorf PCR Tubes, 0.2 mL

- > Contamination shield on hinged lid
- > Defined lid position due to special hinge
- > High transparency even at the base of the tube
- > Etched lid for labeling
- > For use with thermal cyclers with 0.2 mL block format
- > Also available in 8-tube strip format
- > Lot specific certified free from human DNA, DNase, RNase and PCR inhibitors *



Eppendorf PCR Tubes, 0.5 mL

- > Etched lid for labeling
- > Tight seal but easy to open
- > For use with all thermal cyclers with 0.5 mL block format
- > Lot specific certified free from human DNA, DNase, RNase and PCR inhibitors *



Eppendorf PCR Tube Strips

- > 8 reaction tubes in strip-format – ideal for small sample volumes
- > Easily adaptable for automation
- > Sealable using flat or domed strip-lids
- > Lot specific certified free from human DNA, DNase, RNase and PCR inhibitors*



Cap Strips

- > Strips with eight microcaps for PCR tube strips
- > Easy and rapid sealing of Eppendorf PCR tube strips
- > Flat Cap Strips are suitable for real-time PCR
- > Autoclavable (121 °C, 20 min)



Masterclear® Cap Strips and real-time PCR Tube Strips

- > White wells for better reflection
- > High mechanical stability
- > Extremely thin walls for optimal heat transfer
- > Cap strips with inverted dome to reduce volume of the tubes
- > Cap strips optimized for maximum light transmission

*Download of certificates on www.eppendorf.com/certificates





Eppendorf Handling Solutions

Liquid Handling
Cell Handling
Sample Handling

To make your job in the lab easier and more efficient – with this goal in mind we are developing products and solutions in the areas of Liquid Handling, Cell Handling, and Sample Handling. Visit the Eppendorf Handling Solutions online sphere and dive into the area of your choice, learn new things, and have fun as well: www.eppendorf.com/handling-solutions



Liquid Handling



In 1961, Eppendorf launched the first piston-stroke pipette. Today, our broad product offerings in Liquid Handling range from manual pipettes to electronic pipettes, dispensers and burettes to automated pipetting systems. Eppendorf products are associated with state-of-the-art technology, outstanding ergonomics and award-winning design. This applies to both devices and the requisite consumables such as pipette tips and Combitips®.



■ Easypet® 3

Experience a new dimension of electronic pipetting with complete speed control and the utmost precision.

- > Ideal for fast and aseptic filling of tissue culture vessels
- > Lightweight and well-balanced design allowing for one-hand fatigue-free pipetting



■ Eppendorf Serological Pipets

Designed to work in perfect harmony with your Easypet® 3 produced from ultra-clear-virgin polystyrene.

- > Certified absence of detectable pyrogens, DNA, RNase and DNase. Non-cytotoxic. Sterility assurance level of 10⁻⁶.
- > Individually wrapped and packaged in a robust dispenser box.



■ Multipette® E3/E3x

A motor driven dispensing system that utilizes the positive displacement principle and is capable of accurately pipetting any liquid.

- > Dispense up to 100 times without refill, an ideal solution for filling plates
- > Dispense any liquid, even foaming cell culture media and supplements



■ Combitips advanced®

Elongated positive displacement tips designed to work in perfect harmony with your Multipette® E3/E3x.

- > Made of virgin polypropylene without the use of slip agents, biocides and plasticizers
- > Certificate of quality for the absence of mouse embryotoxicity



■ Eppendorf Xplorer®

The Eppendorf Xplorer electronic pipettes are designed to eliminate many of the potential error risks associated with manual pipetting.

- > Single, 8-, and 12-channel pipettes for liquid volumes from 0.5 µL to 10 mL
- > Ideal for time-effective sequential dispensing and pipetting when working with plates



■ Eppendorf PhysioCare Concept®

The use of Eppendorf liquid handling products has been proven to reduce physical and psychological strain to a minimum.

- > While you spend a lot of time pipetting in your lab Eppendorf takes care of ergonomic pipette design according to your needs
- > For an enhanced workflow process

Eppendorf Tubes® 3810X

Ordering Information

Description	Color code	Order no.
Eppendorf Tubes® 3810X , 1.5 mL, <i>g</i> -safe® centrifugation stability		
Eppendorf Quality™, 1,000 tubes	<input type="checkbox"/> colorless	0030 125 150
Eppendorf Quality™, 1,000 tubes	<input checked="" type="checkbox"/> blue	0030 125 177
Eppendorf Quality™, 1,000 tubes	<input checked="" type="checkbox"/> yellow	0030 125 207
Eppendorf Quality™, 1,000 tubes	<input checked="" type="checkbox"/> green	0030 125 185
Eppendorf Quality™, 1,000 tubes	<input checked="" type="checkbox"/> red	0030 125 193
PCR clean, 1,000 tubes	<input type="checkbox"/> colorless	0030 125 215
Eppendorf Tube Rack , 36 positions, for 1.5 mL and 2.0 mL tubes, 2 pcs. polypropylene, numbered positions, autoclavable		0030 119 819
Storage Box 8 × 8 , for 64 tubes 1–2 mL, 3 pcs. height 53 mm, 2 inch, polypropylene, for freezing to -86°C, autoclavable, with lid and alphanumeric code		0030 140 524

Eppendorf Safe-Lock Tubes

Ordering Information

Description	Color code	Order no.
Eppendorf Safe-Lock Tubes , 0.5 mL		
Eppendorf Quality™, 500 tubes	<input type="checkbox"/> colorless	0030 121 023
Eppendorf Quality™, 500 tubes	<input checked="" type="checkbox"/> yellow	0030 121 112
Eppendorf Quality™, 500 tubes	<input checked="" type="checkbox"/> red	0030 121 120
Eppendorf Quality™, 500 tubes	<input checked="" type="checkbox"/> blue	0030 121 139
Eppendorf Quality™, 500 tubes	<input checked="" type="checkbox"/> green	0030 121 147
Eppendorf Quality™, 500 tubes	<input checked="" type="checkbox"/> amber (light protection)	0030 121 155
Eppendorf Quality™, 500 tubes	<input type="checkbox"/> assorted colors (per 100)	0030 121 708
Biopur®, 50 tubes, individually packed	<input type="checkbox"/> colorless	0030 121 570
Forensic DNA Grade, 500 tubes (10 bags × 50 tubes)	<input type="checkbox"/> colorless	0030 123 603
PCR clean, 500 tubes	<input type="checkbox"/> colorless	0030 123 301
Eppendorf Safe-Lock Tubes , 1.5 mL		
Eppendorf Quality™, 1,000 tubes	<input type="checkbox"/> colorless	0030 120 086
Eppendorf Quality™, 1,000 tubes	<input checked="" type="checkbox"/> yellow	0030 120 159
Eppendorf Quality™, 1,000 tubes	<input checked="" type="checkbox"/> red	0030 120 167
Eppendorf Quality™, 1,000 tubes	<input checked="" type="checkbox"/> blue	0030 120 175
Eppendorf Quality™, 1,000 tubes	<input checked="" type="checkbox"/> green	0030 120 183
Eppendorf Quality™, 1,000 tubes	<input checked="" type="checkbox"/> amber (light protection)	0030 120 191
Eppendorf Quality™, 1,000 tubes	<input type="checkbox"/> assorted colors (per 200)	0030 121 694
Biopur®, 100 tubes, individually packed	<input type="checkbox"/> colorless	0030 121 589
Forensic DNA Grade, 500 tubes (10 bags × 50 tubes)	<input type="checkbox"/> colorless	0030 123 611
PCR clean, 1,000 tubes	<input type="checkbox"/> colorless	0030 123 328
Eppendorf Safe-Lock Tubes , 2.0 mL		
Eppendorf Quality™, 1,000 tubes	<input type="checkbox"/> colorless	0030 120 094
Eppendorf Quality™, 1,000 tubes	<input checked="" type="checkbox"/> yellow	0030 120 205
Eppendorf Quality™, 1,000 tubes	<input checked="" type="checkbox"/> red	0030 120 213
Eppendorf Quality™, 1,000 tubes	<input checked="" type="checkbox"/> blue	0030 120 221
Eppendorf Quality™, 1,000 tubes	<input checked="" type="checkbox"/> green	0030 120 230
Eppendorf Quality™, 1,000 tubes	<input checked="" type="checkbox"/> amber (light protection)	0030 120 248
Eppendorf Quality™, 1,000 tubes	<input type="checkbox"/> assorted colors (per 200)	0030 121 686
Biopur®, 100 tubes, individually packed	<input type="checkbox"/> colorless	0030 121 597
Forensic DNA Grade, 500 tubes (10 bags × 50 tubes)	<input type="checkbox"/> colorless	0030 123 620
PCR clean, 1,000 tubes	<input type="checkbox"/> colorless	0030 123 344
Micropestle , for resuspending pellets in 1.5 mL/2.0 mL vessels, 10 pcs.		0030 120 973

Eppendorf Tubes® 5.0 mL

Ordering information

Description	Order no.
Eppendorf Tubes® 5.0 mL with snap cap	
Eppendorf Quality™, 200 tubes (2 bags × 100 tubes)	0030 119 401
PCR clean, 200 tubes (2 bags × 100 tubes)	0030 119 460
Sterile, 200 tubes (10 bags × 20 tubes)	0030 119 487
Biopur®, 50 tubes (individually wrapped)	0030 119 479
Forensic DNA Grade, colorless, 200 tubes (4 bags × 50 tubes)	0030 119 606
Protein LoBind, PCR clean, 100 tubes (2 bags × 50 tubes)	0030 108 302
DNA LoBind, PCR clean, 200 tubes (4 bags × 50 tubes)	0030 108 310
Amber (light protection), Eppendorf Quality™, 200 tubes (2 bags × 100 tubes)	0030 119 452
Starter Pack, PCR clean, 400 tubes (2 packages with 2 bags × 100 tubes), 2 racks (with 12 spaces), white, universal adapter for rotors with bore for 15 mL conical tubes (8 pcs.)	0030 119 380
Tube Clip 5.0 mL, 10 pcs., secures lid for boiling	0030 119 509
Eppendorf Tubes® 5.0 mL with screw cap	
Eppendorf Quality™, 200 tubes (2 bags × 100 tubes)	0030 122 305
PCR clean, 200 tubes (2 bags × 100 tubes)	0030 122 313
Sterile, pyrogen-, DNase-, RNase-, and DNA-free, 200 tubes (2 bags × 100 tubes)	0030 122 321
DNA LoBind, PCR clean, 200 tubes	0030 122 348
Protein LoBind, PCR clean, 200 tubes	0030 122 356
Amber (light protection), 200 tubes	0030 122 330
Starter Pack, PCR clean, 400 tubes (2 packages with 2 bags × 100 tubes), 2 racks (with 12 spaces), white, universal adapter for rotors with bore for 15 mL conical tubes (8 pcs.)	0030 122 364

Eppendorf Conical Tubes 15 mL

Ordering information

Description	Order no.
Eppendorf Conical Tubes, 15 mL, Sterile , pyrogen-, DNase-, RNase-, and DNA-free, 500 tubes (10 bags × 50 tubes)	0030 122 151
Eppendorf Conical Tubes, 15 mL, Sterile , pyrogen-, DNase-, RNase-, human and bacterial DNA-free, colorless, 500 tubes (20 racks × 25 tubes)	0030 122 160
Eppendorf Conical Tubes, 15 mL, Forensic DNA Grade , colorless, 100 tubes, individually wrapped	0030 122 259
Eppendorf Conical Tubes, 15 mL, Protein LoBind, PCR clean , colorless, 200 tubes (4 bags × 50 tubes)	0030 122 216
Eppendorf Conical Tubes, 15 mL, DNA LoBind, PCR clean , colorless, 200 tubes (4 bags × 50 tubes)	0030 122 208
Eppendorf Conical Tubes, 15 mL, Sterile , pyrogen-, DNase-, RNase-, human and bacterial DNA-free, amber (light protection) 200 tubes (4 bags × 50 tubes)	0030 122 194

Eppendorf Conical Tubes 25 mL

Ordering information

Description	Order no.
Eppendorf Conical Tubes 25 mL with snap cap	
Eppendorf Quality™, colorless, 200 tubes, (5 bags × 40 tubes)	0030 118 405
PCR clean, colorless, 200 tubes, (5 bags × 40 tubes)	0030 118 413
Sterile, pyrogen-, DNase-, RNase-, human and bacterial DNA-free, colorless, 150 tubes, (6 bags × 25 tubes)	0030 118 421
Starter Pack, PCR clean, 200 tubes, 4 single tube stands, 6 centrifugation adapters	0030 118 502
Eppendorf Conical Tubes 25 mL with screw cap	
Eppendorf Quality™, colorless, 200 tubes, (4 bags × 50 tubes)	0030 122 410
PCR clean, colorless, 200 tubes, (4 bags × 50 tubes)	0030 122 429
Sterile, pyrogen-, DNase-, RNase-, human and bacterial DNA-free, colorless, 200 tubes, (8 bags × 25 tubes)	0030 122 437
Starter Pack, PCR clean, 200 tubes, 4 single tube stands, 6 centrifugation adapters	0030 122 500

Eppendorf Conical Tubes 50 mL

Ordering information

Description	Order no.
Eppendorf Conical Tubes, 50 mL, Sterile , pyrogen-, DNase-, RNase-, and DNA-free, 500 tubes (20 bags x 25 tubes)	0030 122 178
Eppendorf Conical Tubes, 50 mL, Sterile , pyrogen-, DNase-, RNase-, human and bacterial DNA-free, colorless, 300 tubes (12 racks x 25 tubes)	0030 122 186
Eppendorf Conical Tubes, 50 mL, Forensic DNA Grade , colorless, 48 tubes, individually wrapped	0030 122 267
Eppendorf Conical Tubes, 50 mL, Protein LoBind, PCR clean , colorless, 200 tubes (4 bags x 50 tubes)	0030 122 240
Eppendorf Conical Tubes, 50 mL, DNA LoBind, PCR clean , colorless, 200 tubes (4 bags x 50 tubes)	0030 122 232
Eppendorf Conical Tubes, 50 mL, Sterile , pyrogen-, DNase-, RNase-, human and bacterial DNA-free, amber (light protection) 200 tubes (4 bags x 50 tubes)	0030 122 224

Eppendorf Tube Racks

Ordering information

Description	Order no.
Eppendorf Tube Rack for 0.5 mL tubes , 48 wells (3 rows of 16 wells each), 2 pcs.	0030 119 800
Eppendorf Tube Rack for 1.5/2.0 mL tubes , 36 wells (3 rows of 12 wells each), 2 pcs.	0030 119 819
Eppendorf Tube Rack for 5.0/15 mL tubes , 12 wells (2 rows of 6 wells each), 2 pcs.	0030 119 827
Eppendorf Tube Rack for 5.0/15/25/50 mL tubes , 12 wells (6 x 5.0/15 mL and 6 x 25/50 mL), 2 pcs.	0030 119 835
Eppendorf Tube Rack for cryogenic tubes , 36 wells (3 rows of 12 wells each), 2 pcs.	0030 119 843
Eppendorf Cuvette Rack , 30 wells (3 rows of 10 wells each), 2 pcs.	0030 119 851
Eppendorf Tube Rack for 0.5 mL tubes (16 spaces) , 2 pcs., white, also suitable for 15 mL conical screw cap tubes	0030 119 495

Eppendorf Storage Boxes

Ordering information

Description	Order no.
Eppendorf Storage Box 10 x 10, for 100 cryogenic tubes with internal thread , 3 pcs., height 53 mm, 2 inches, polypropylene, for freezing to -86 °C, autoclavable, with lid and alpha-numeric code	0030 140 508
Eppendorf Storage Box 9 x 9, for 81 screw cap (cryogenic) tubes 1–2 mL , 3 pcs., height 53 mm, 2 inches, polypropylene, for freezing to -86 °C, autoclavable, with lid and alpha-numeric code	0030 140 516
Eppendorf Storage Box 9 x 9, for 81 screw cap (cryogenic) tubes 3 mL , 2 pcs., height 76 mm, 3 inches, polypropylene, for freezing to -86 °C, autoclavable, with lid and alpha-numeric code	0030 140 540
Eppendorf Storage Box 9 x 9, for 81 screw cap (cryogenic) tubes 4–5 mL , 2 pcs., height 102 mm, 4 inches, polypropylene, for freezing to -86 °C, autoclavable, with lid and alpha-numeric code	0030 140 567
Eppendorf Storage Box 8 x 8, for 64 tubes 1–2 mL , 3 pcs., height 53 mm, 2 inches, polypropylene, for freezing to -86 °C, autoclavable, with lid and alpha-numeric code	0030 140 524
Eppendorf Storage Box 5 x 5, for 25 tubes 5 mL , 4 pcs., height 64 mm, 2.5 inches, polypropylene, for freezing to -86 °C, autoclavable, with lid and alpha-numeric code	0030 140 532
Eppendorf Storage Box 5 x 5, for 25 tubes 5 mL with screw cap , 2 pcs., height 76 mm, 3 inches, polypropylene, for freezing to -86 °C, autoclavable, with lid and alpha-numeric code	0030 140 613
Eppendorf Storage Box 5 x 5, for 25 tubes 15 mL , 2 pcs., height 127 mm, 5 inches, polypropylene, for freezing to -86 °C, autoclavable, with lid and alpha-numeric code	0030 140 583
Eppendorf Storage Box 3 x 3, for 9 tubes 25 mL and 4 tubes 5 mL , 2 pcs., height 89 mm, 3.5 inches, polypropylene, for freezing to -86 °C, autoclavable, with lid and alpha-numeric code	0030 140 729
Eppendorf Storage Box 3 x 3, for 9 tubes 50 mL and 4 tubes 15 mL , 2 pcs., height 127 mm, 5 inches, polypropylene, for freezing to -86 °C, autoclavable, with lid and alpha-numeric code	0030 140 591

Eppendorf PCR Tubes

Ordering information

Description	Order no.
Eppendorf PCR Tubes, 0.2 mL	
PCR clean, colorless, 1,000 tubes	0030 124 332
Forensic DNA Grade, 500 tubes (10 bags × 50 tubes)	0030 124 707
PCR clean, 8-tube strips, 120 pcs. (960 tubes)	0030 124 359
Eppendorf PCR Tubes, 0.5 mL	
PCR clean, with hinged lid, clear, 500 pcs.	0030 124 537

Eppendorf PCR Tube Strips

Ordering information

Description	Order no.
Eppendorf PCR Tube Strips, 0.1 mL	
PCR clean, without lids (12 × 10 strips)	0030 124 804
PCR clean, with Cap Strips, domed (12 × 10 strips)	0030 124 812
PCR clean, with Cap Strips, flat (12 × 10 strips)	0030 124 820

Eppendorf PCR Cap Strips

Ordering information

Description	Order no.
Cap Strips, 8-strips	
domed, 120 pcs. (12 × 10 pcs.)	0030 124 839
flat, 120 pcs. (12 × 10 pcs.)	0030 124 847

Masterclear® Cap Strips and *real-time* PCR Tube Strips

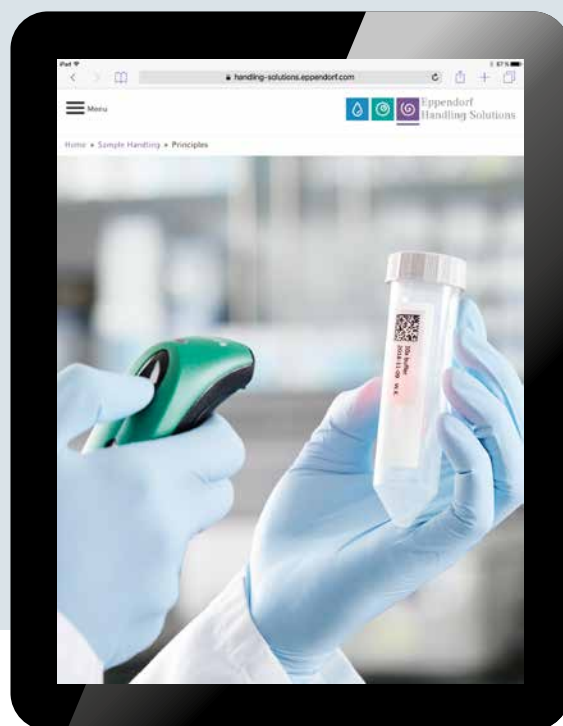
Ordering information

Description	Order no.
<i>real-time</i> PCR Tube Strips, without caps	
120 pcs. (12 × 10 pcs.)	0030 132 882
Masterclear® Cap Strips and <i>real-time</i> PCR Tube Strips	
120 pcs. (12 × 10 pcs.)	0030 132 890
Masterclear® Cap Strips	
120 pcs. (12 × 10 pcs.)	0030 132 874

Trying to Decipher Vessel Labels?

»Stored vessels must be labeled« – naturally, every lab member agrees. In reality you always find some (or even more) vessels in your freezer without any labeling or with labeling resembling hieroglyphs. In many labs, there is a second rule: label-free vessels are disposed of as soon as they are found.

Proper labeling is recommended to make reading easy and as reliable as possible for everyone. Printed labels on vessels can contain either plain writing, barcode, or both. Smart labeling of your high-value samples is crucial for safe identification and ultimately for safe results. Manage your (barcoded) samples with sample management software like eLABInventory.



> Start a free 30-day-trial at www.elabinventory.com/eppendorf

000 «Диаэм»

Москва

ул. Магаданская, д. 7, к. 3 ■ тел./факс: (495) 745-0508 ■ sales@dia-m.ru

www.dia-m.ru

С.-Петербург
+7 (812) 372-6040
spb@dia-m.ru

Новосибирск
+7(383) 328-0048
nsk@dia-m.ru

Воронеж
+7 (473) 232-4412
vrn@dia-m.ru

Йошкар-Ола
+7 (927) 880-3676
nba@dia-m.ru

Красноярск
+7(923) 303-0152
krsk@dia-m.ru

Казань
+7(843) 210-2080
kazan@dia-m.ru

Ростов-на-Дону
+7 (863) 303-5500
rnd@dia-m.ru

Екатеринбург
+7 (912) 658-7606
ekb@dia-m.ru

Кемерово
+7 (923) 158-6753
kemerovo@dia-m.ru

Армения
+7 (094) 01-0173
armenia@dia-m.ru

