

Qsep₁ Bio-Fragment Analyzer

Portable Capillary Electrophoresis

Features

- *Hand carry size*
- *5kg weight only*
- *Wi-Fi connectivity*
- *DC 12V power*
(works with car adapters)



ДИА•М
современная лаборатория

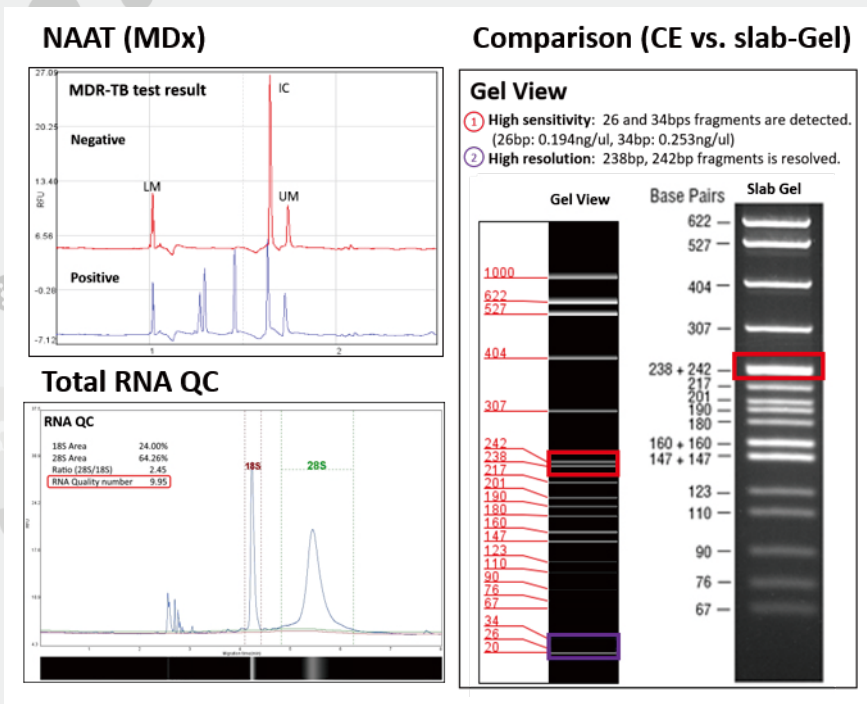
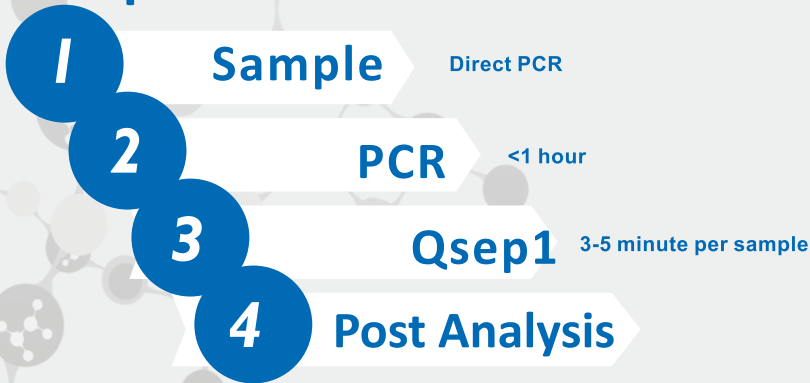
www.dia-m.ru
заказ on-line

Lightweight • Compact • Easy-to-Use

- **Clinic**
(For PCR Diagnostics test)
- **Point of care**
- **Mobile laboratory**
- **Teaching laboratory**

Applications of Fragment Analysis (DNA/RNA)

Steps:



System Highlights

- Auto Sampling
Automated process 1-16 samples
*Special consumables required for analysis of 16 samples
- Disposable Gel-capillary
No need for gel preparation
100-300 runs per cartridge
- Rapid Analysis
2-7 minutes per sample
- High Sensitivity
Detects as low as 0.1ng/uL
- High Resolution
1-4 bp (Between 100-500 bp)
- Minimum Sample Volume
1uL in Micro-Vial (Cat. No.: C104250)
10/20uL in Standard 0.1/0.2 ml PCR tube

Applications

- CRISPR QC
- Genetic Profiling
- Restriction Fragment Length Polymorphism (RFLP)
- PCR Product check (PCR Optimization)
- DNA Primer QC
- Genomic DNA & NGS QC
- Plasmid Purification & Vector Cloning Analysis
- Total RNA QC
- Synthesized Oligonucleotides

Specifications

- Detection: Fluorescence
- Light Source: LED
- Separation Voltage: 1-8KV
- Connectivity: Wi-Fi remote control
- Power Source: DC 12V (110-240V)
- System Weight: 5.5 kg
- Instrument Volume: 24x21x30 cm

000 «Диаэм»

Москва
ул. Магаданская, д. 7, к. 3 ■ тел./факс: (495) 745-0508 ■ sales@dia-m.ru

www.dia-m.ru

С.-Петербург
+7 (812) 372-6040
spb@dia-m.ru

Новосибирск
+7 (383) 328-0048
nsk@dia-m.ru

Воронеж
+7 (473) 232-4412
vrn@dia-m.ru

Йошкар-Ола
+7 (927) 880-3676
nba@dia-m.ru

Красноярск
+7 (923) 303-0152
krsk@dia-m.ru

Казань
+7 (843) 210-2080
kazan@dia-m.ru

Ростов-на-Дону
+7 (863) 303-5500
rnd@dia-m.ru

Екатеринбург
+7 (912) 658-7606
ekb@dia-m.ru

Кемерово
+7 (923) 158-6753
kemerovo@dia-m.ru

Армения
+7 (094) 01-0173
armenia@dia-m.ru

