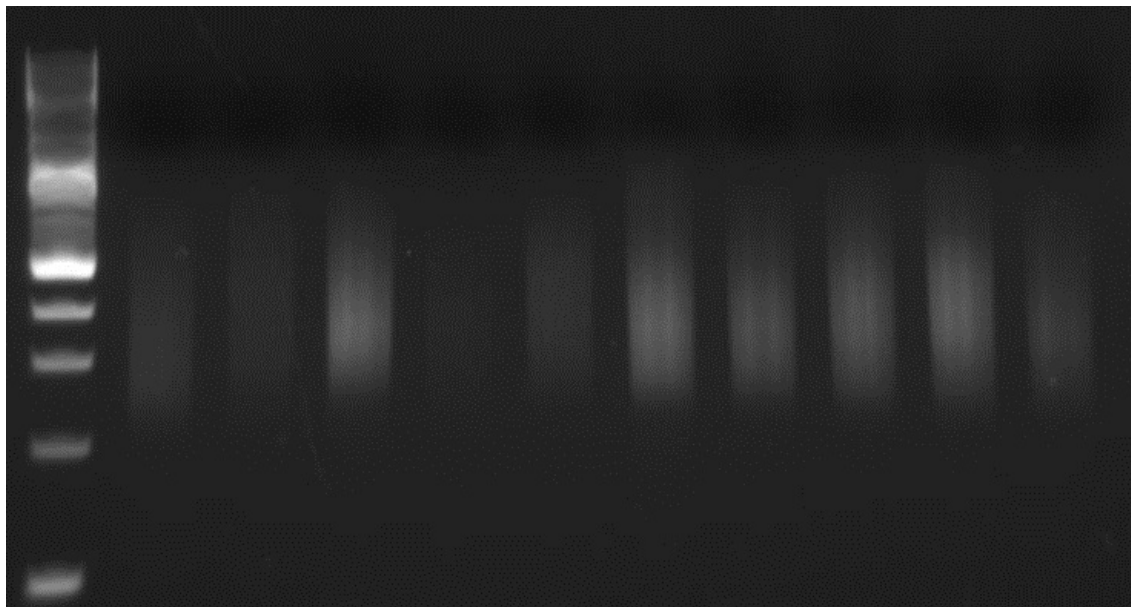


## Bacterial Genomic DNA Shearing 2

Example protocols and results are based on customer feedback.



Lonza 1.2% Gel, NEB 2-log ladder, sheared samples

### **Protocol Information**

**Cell Type:** Bacteria and purified DNA (*Vibrio cholera* and *E. coli*)

**Total Sample Volume:** 100-500ul

**Sample Concentration:** 50-100ng/ul

Sample Lysis Solution: PBS + 0.1% Tween

**Sonicator Amplitude Setting:** 60-80%

**Sonication Pulse Rate:** 15 seconds On, 15 seconds Off

**Total Sonication On Time:** 20-30 min.

**Sample Process Temperature:** 4°C (*Chiller Temperature setting; System placed in cold room*)

**Customer Notes:** We use the Q800R for cellular lysis and DNA shearing (*Vibrio cholera* and *E. coli*) for Illumina next generation sequencing library preparation. Using my protocol I always get uniform shearing to ~250-400bp. This system is better than probe sonicators for lysing small aliquots as the sample stays cooled and the process is automated. We use Denville 1.7ml microcentrifuge tube (cat# C2170).

**Sequencing platform:** Illumina