

Scan® 100

Colony counter

ДИА•М
современная лаборатория

www.dia-m.ru
заказ on-line



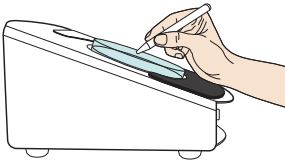
Counting
made easy

interscience

Comfort and technology

Scan® 100 is a high-tech colony counter remarkable for its user-friendly functions and great ergonomics, which allow accurate colony counting on all media used in microbiology: Petri dishes, Petrifilm™, filtration membrane, etc. A LED lighting system gives a contrasting and clear view of the colonies. The integrated USB port allows easy export of the result to the software of your choice (PC and Mac) to guarantee traceability of the results.

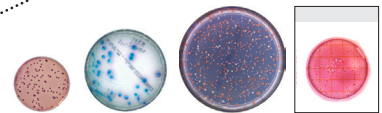
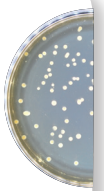
Ergonomics



- Count with pen of your choice
- Ergonomic counting area
- Foam hand-rest

Adjustable white LED lighting

- Easy adjustment of the lighting with the "Lighting" button
- The operator has a clear vision with the indirect lighting
- LEDs: long-life lights, do not produce heat and have no wearing parts



Petri-

Colony counting on all culture media:

- Petri dishes from 55 mm to 150 mm
- Petrifilm™
- Filtration membranes
- Compact Dry™, MC-media Pads™

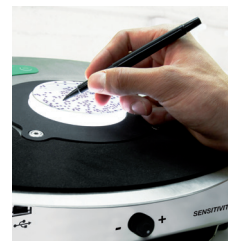
Traceability



- Data export via USB, LIMS, Excel™: time-saving, error-free results

Adjustable touch surface

- Intuitive counting with the tactile pressure + beeping sound
- Adjustable sensitivity with the "Sensitivity" button



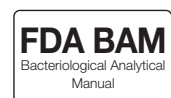
Storage area

- Easy storage of the counting grids

High technology



Traceability



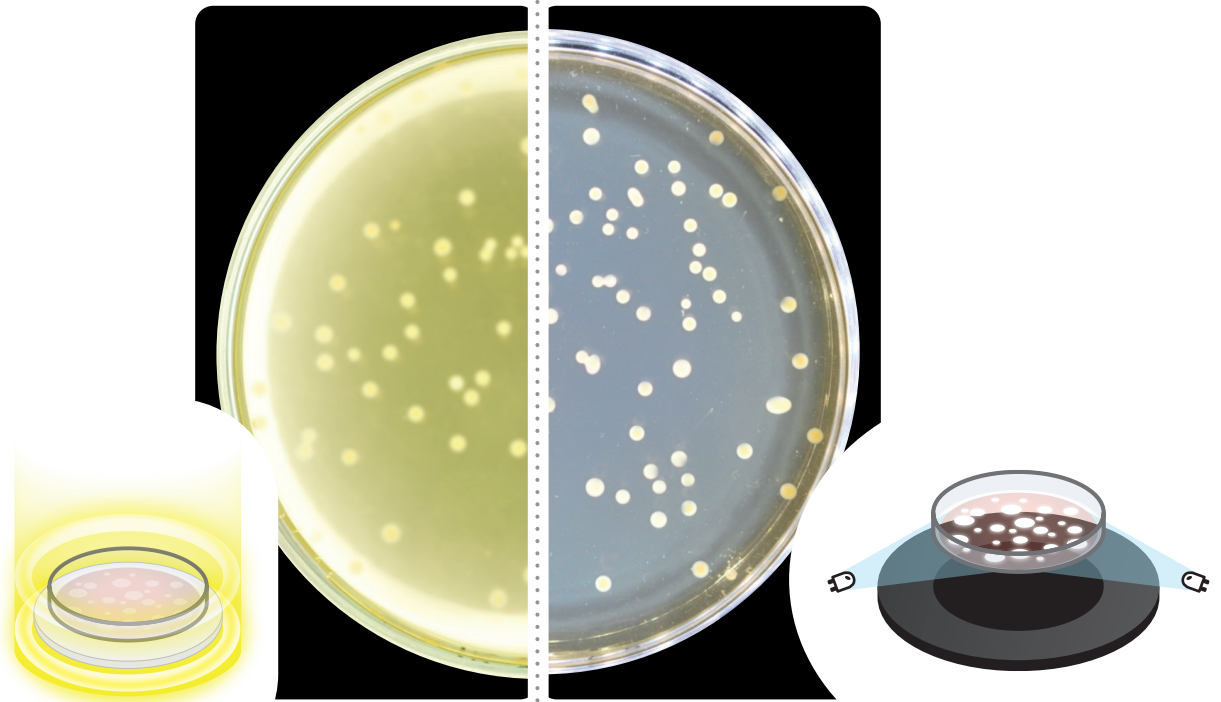
Dark Field technology: accurate lighting for your analyses

INTERSCIENCE designed a long-lasting white LED lighting system. The lights are arranged in a circle to provide perfect contrast of the colonies.



Ordinary neon lighting counter

Scan® 100: LED lighting system



Lighting with standard neon : the yellowish light spreads itself in the agar and the colonies. Lighting is uneven and contrast is imperfect.

The colonies are difficult to count. The operator is hindered by the lighting.

Dark Field technology : the light is diffused in the colony, the colony is highlighted on a perfectly black background.

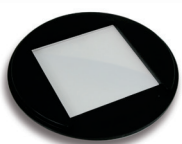
The contrast is optimal with this indirect white lighting, the colonies are easy to count. The operator gains in working comfort and precision.



Options



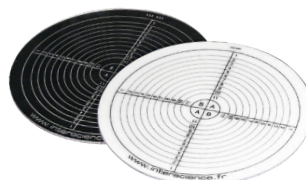
Magnifying lens
Magnifying lens (X2) + 1
flexible arm for Scan® 100
Ref 435 001



All-media adapter
Adapter for Petrifilm™,
MC-media Pads™, Compact
Dry™ for Scan® 100
Ref 435 002



Optical cleaner + whipes
Ref 435 702

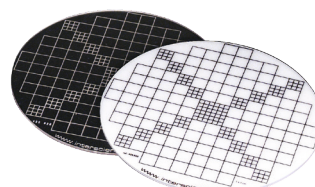


Spiral® grids

1 transparent background and
1 white diffusing background
for Scan® 100

3 models :

- Spiral DS® 90/150 mm - Ref 435 010
- easySpiral® 90 mm - Ref 435 030
- easySpiral® 150 mm - Ref 435 035





Wolffhuegel grid

1 transparent background and
1 white diffusing background
for Scan® 100

Ref 435 020

Technical specifications

Scan® 100	Ref 435 000		
Petri dish size	55, 65, 90, 150 mm - All media		
Made from	Stainless steel - neoprene cell		
Screen	Digital, multi-function	Counting	0-1998 CFU
Export	Via USB for transfer to any software without prior installation		
Indicative sound	Adjustable volume: 4 levels		
LED lighting	Adjustable lighting		
Counting zone	Touch surface: adjustable sensitivity		
Storage	Built-in storage rack for accessories		
Voltage - Frequencies	100-240 V~ 50-60 Hz		
Dimensions (w x d x h)	24,9 x 31,2 x 17,3 cm	Weight	4,57 kg
Box (w x d x h)	50 x 40 x 40 cm		
Warranty	3 years warranty		
Delivered accessories			
<ul style="list-style-type: none"> - 1 White background plate - 1 Petri dish adapter Ø 90 mm - 1 Power cable - 1 USB cable - 1 black marker pen - 1 quick user guide 			
Manufactured in compliance with			
<p>Products made for INTERSCIENCE by Interlab, an ISO 9001 certified company.</p> <div style="display: flex; justify-content: space-around; align-items: center;"> <div style="text-align: center;">  </div> <div style="text-align: center;">  </div> </div> <div style="display: flex; justify-content: space-around; align-items: center; margin-top: 10px;"> <div style="border: 1px solid black; padding: 2px; text-align: center;"> WEEE 2002/96/EC </div> <div style="border: 1px solid black; padding: 2px; text-align: center;"> RoHS 2002/95/EC </div> </div>			

Also available



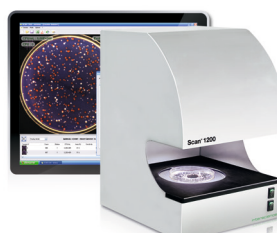
Scan® 300

> Automatic colony counter
Ref 436 300



Scan® 500

> Automatic colony counter / Inhibition zone reader
Ref 436 000



Scan® 1200

> Automatic colony counter / Inhibition zone reader
Ref 437 000



Scan® 4000

> Automatic colony counter / inhibition zone reader
Ref 438 000

000 «Диаэм»

Москва

ул. Магаданская, д. 7, к. 3 ■ тел./факс: (495) 745-0508 ■ sales@dia-m.ru

www.dia-m.ru

С.-Петербург
+7 (812) 372-6040
spb@dia-m.ru

Новосибирск
+7 (383) 328-0048
nsk@dia-m.ru

Воронеж
+7 (473) 232-4412
vrn@dia-m.ru

Йошкар-Ола
+7 (927) 880-3676
nba@dia-m.ru

Красноярск
+7 (923) 303-0152
krsk@dia-m.ru

Казань
+7 (843) 210-2080
kazan@dia-m.ru

Ростов-на-Дону
+7 (863) 303-5500
rnd@dia-m.ru

Екатеринбург
+7 (912) 658-7606
ekb@dia-m.ru

Кемерово
+7 (923) 158-6753
kemerovo@dia-m.ru

Армения
+7 (094) 01-0173
armenia@dia-m.ru

