

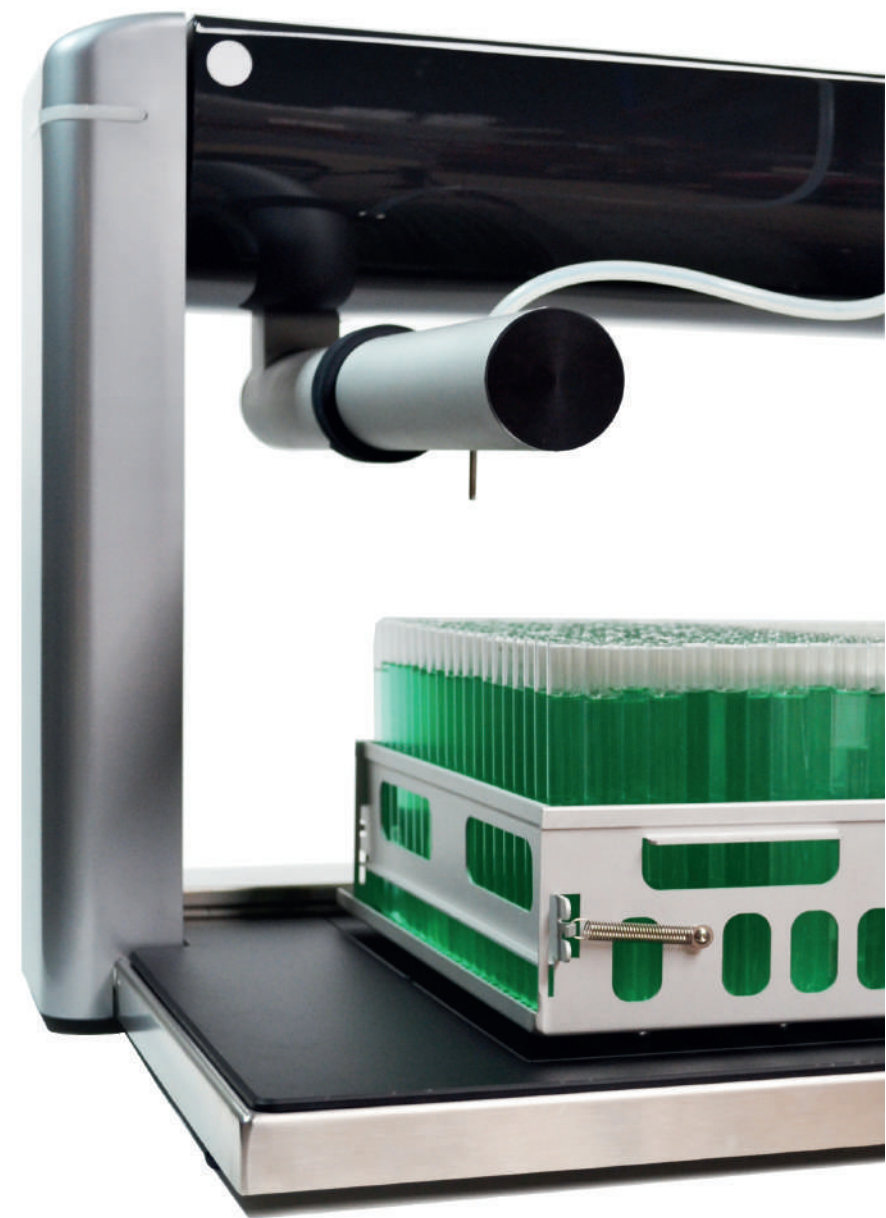
ΔΙΑ•M  
современная лаборатория

www.dia-m.ru  
заказ on-line

# POLYWEL®

**AUTOMATIC TUBES AND BOTTLES FILLER**

Versatility, accuracy and speed



# AUTOMATIC TUBES AND BOTTLES FILLER

Versatility, accuracy and speed

# POLYWEL®

 1000 tubes per hour



 Up to 1008 tubes per run\*

 8 racks of 120 tubes or 4 racks of 252 tubes

## 3D driven

Flexible and adaptable to your different containers

## Two distribution nozzles :

Ø 3mm : accuracy   
Ø 6mm : speed 

## Autoclavable racks

To be loaded directly from its original package

End of the cycle light indicator

Up to 20 programs, quick to start

Accuracy from 6ml :  $\pm 0.1$  ml  
Calibration at the beginning of the run  
Calibration during the run

## Easy cleaning

Removable tray and stainless steel surface



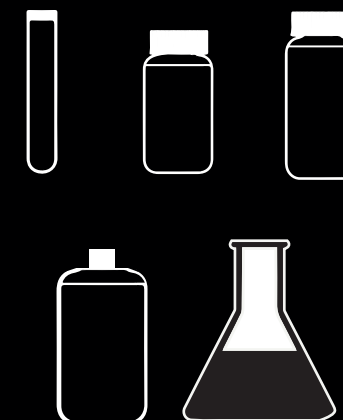
\* Ø 18mm tubes



# SPECIFICATIONS

## Adaptability to your containers

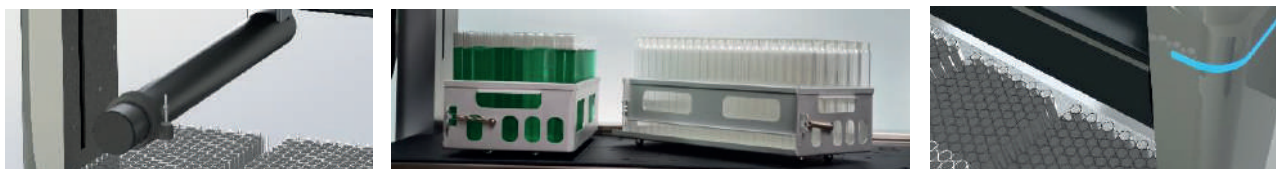
Distribution of media, diluent or other liquids in tubes, bottles, Petri dishes, square dishes ....



*Taylor-made racks on request !*

## TECHNICAL DATA SHEET

Distribution volume	From 1 to 9999.9ml
Tubes per hour	1000
Tubes per rack (Ø 18mm)	Large rack : 252 / Small rack : 120
Programs	20
Tubing diameters	1.6 mm / 3.2 mm / 6.4 mm
Adjustable speed	✓
Calibration	Start and during the cycle
Maximum size of containers	Height : between 115 and 250mm Width : up to 190mm Depth : up to 390mm
Dimensions	1130 x 600 x 610 mm
Power supply	230 V ± 10% / 50-60 Hz / 160 W
Warranty	1 year
Country of origin	European Union - France



# ACCESSORIES



## Delivred with :

Polywel (POLW1001) - Polypump - Set of tubing 3.2mm (POLW2005) - Distribution nozzle (POLW2008) - USB cable - Large rack 250 (POLW2001) - Tubing holder - Connection cable - USB key with user manual and quality report

## Accessories :

- POLW2001 : Large rack 250
- POLW2002 : Small rack 120
- POLW2003 : Angled loading holder for rack
- POLW2004 : Set of tubing 6.4mm with distribution nozzle
- POLW2005 : Set of tubing 3.2mm with distribution nozzle
- POLW2006 : Set of tubing 1.6mm with distribution nozzle
- POLW2007 : "Accuracy" distribution nozzle
- POLW2008 : "Speed" distribution nozzle
- POLW3001 : Rotor tubing 6.4mm - 5 PCS
- POLW3002 : Rotor tubing 3.2 - 5 PCS



**20 YEARS EXPERIENCE  
IN MICROBIOLOGY EQUIPMENT DESIGN**

**A FULLY COMMITTED TEAM  
OF SERVICE ENGINEERS AND MICROBIOLOGISTS**



**MORE THAN 70 INTERNATIONAL DISTRIBUTORS  
TRAINED TO THE LATEST A.B.E. TECHNOLOGIES**

**A CONNECTED EQUIPMENT GENERATION  
FOR TRACEABILITY AND PRODUCTIVITY**



## FOOD SAMPLE PREPARATION

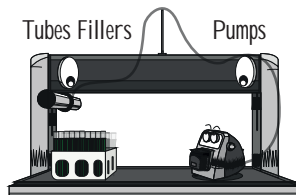
Blenders



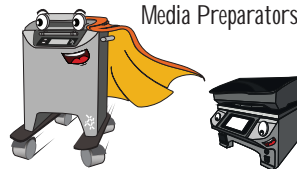
Diluters



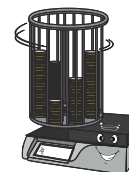
Tubes Fillers Pumps



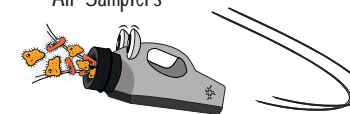
Media Preparators



Petri Fillers



Air Samplers



**000 «Диаэм»**

**Москва**

ул. Магаданская, д. 7, к. 3 ■ тел./факс: (495) 745-0508 ■ [sales@dia-m.ru](mailto:sales@dia-m.ru)

**[www.dia-m.ru](http://www.dia-m.ru)**

**С.-Петербург**

+7 (812) 372-6040  
[spb@dia-m.ru](mailto:spb@dia-m.ru)

**Новосибирск**

+7(383) 328-0048  
[nsk@dia-m.ru](mailto:nsk@dia-m.ru)

**Воронеж**

+7 (473) 232-4412  
[vrn@dia-m.ru](mailto:vrn@dia-m.ru)

**Йошкар-Ола**

+7 (927) 880-3676  
[nba@dia-m.ru](mailto:nba@dia-m.ru)

**Красноярск**

+7(923) 303-0152  
[krsk@dia-m.ru](mailto:krsk@dia-m.ru)

**Казань**

+7(843) 210-2080  
[kazan@dia-m.ru](mailto:kazan@dia-m.ru)

**Ростов-на-Дону**

+7 (863) 303-5500  
[rnd@dia-m.ru](mailto:rnd@dia-m.ru)

**Екатеринбург**

+7 (912) 658-7606  
[ekb@dia-m.ru](mailto:ekb@dia-m.ru)

**Кемерово**

+7 (923) 158-6753  
[kemerovo@dia-m.ru](mailto:kemerovo@dia-m.ru)

**Армения**

+7 (094) 01-0173  
[armenia@dia-m.ru](mailto:armenia@dia-m.ru)

