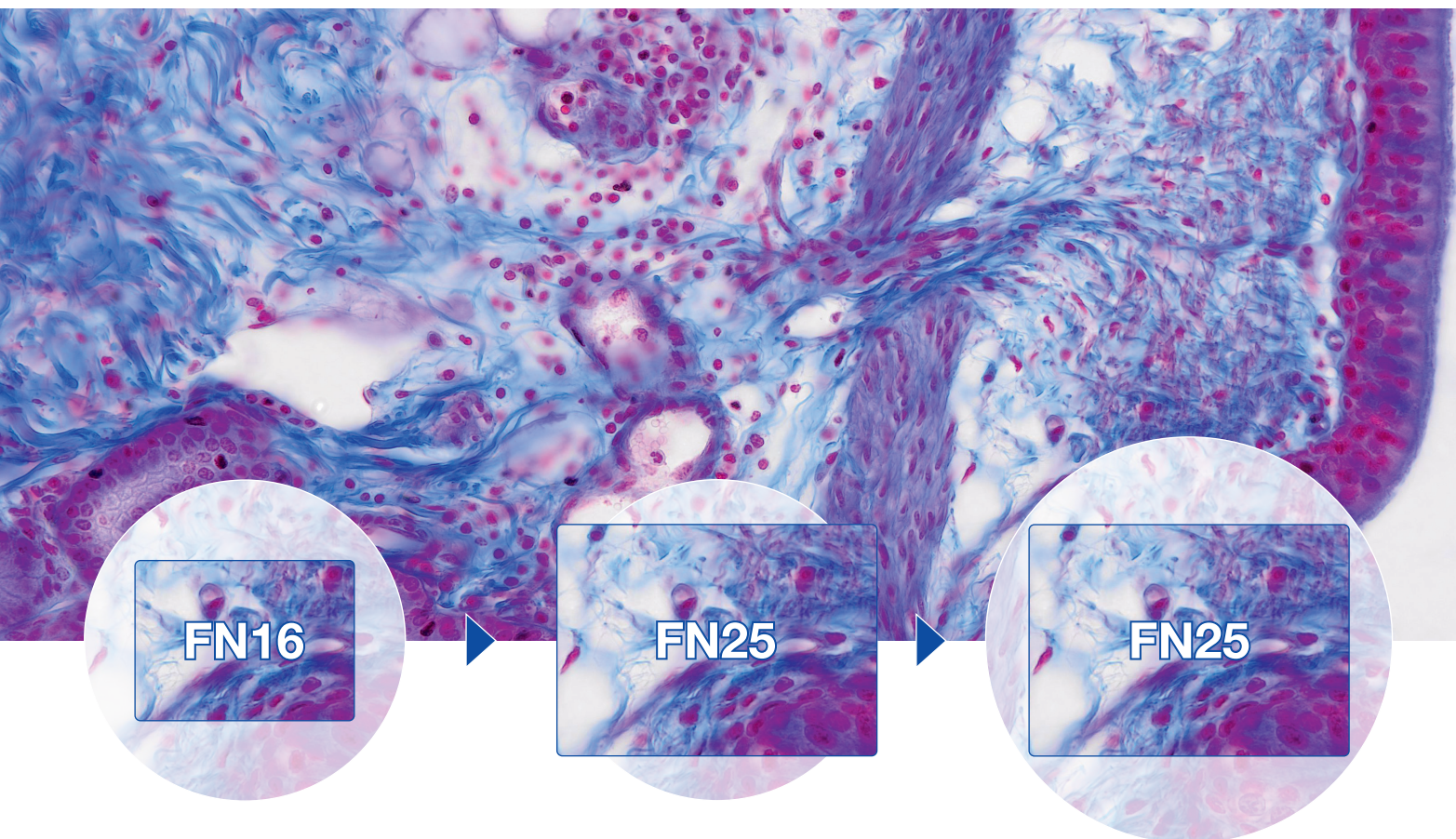


## Olympus Wide Capture

See More. Show More. Save Time.



### Extended View

Free yourself from limitations with Olympus Wide Capture—an extended view of FN25 available on the DP23 and DP28 digital microscope cameras. See and show more with coverage of up to 80% of a standard FN22 ocular view, or save time by capturing larger images when using a super wide field of view.

Experiencing this extended view is easy—choose your camera, select your field of view, and choose a standard or tilting observation tube. It's that simple.



# Create Your Wide Capture Setup—It's as Easy as 1, 2, 3

## Step 1—Choose Your Camera

### DP23



Designed for both routine and research applications, the DP23 microscope camera's unique combination of smart features and accurate color reproduction deliver high-quality images for an accurate workflow.

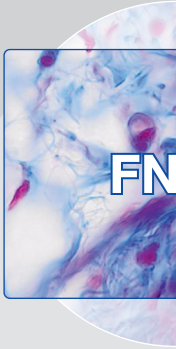
### DP28



With all the features of the DP23 microscope camera, the DP28 camera adds smooth live 4K images and stunning image quality across a wide field of view—ideal for conferencing, teaching, and clinical research.

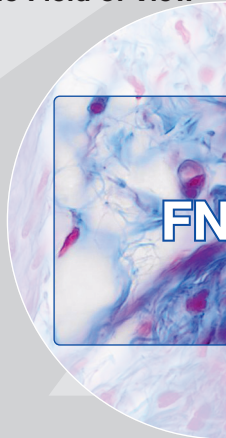
## Step 2—Select Your View

### Standard

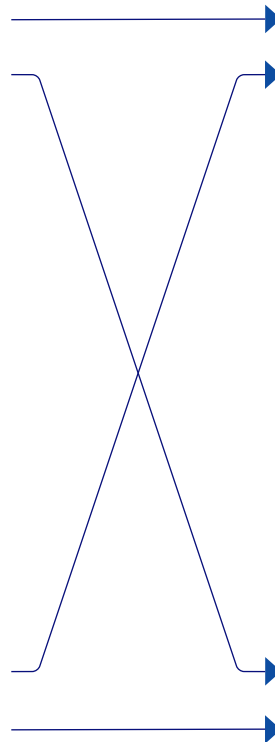


Capture up to 80% of the standard view as well as some extra color.

### Super Wide Field of View



Capture bigger images that reach a wide (FN 26.5) ocular view.



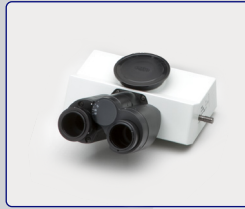
## Enhance Your Wide Capture with X Line Objectives

### Get the most out of your images with X Line objectives:

- Outstanding image flatness from the center to the periphery, even in large FOV observations
- High numerical aperture for high-resolution images
- Improved color correction for high contrast and crisp images



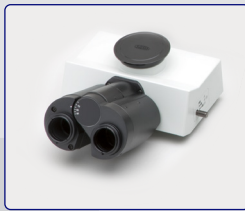
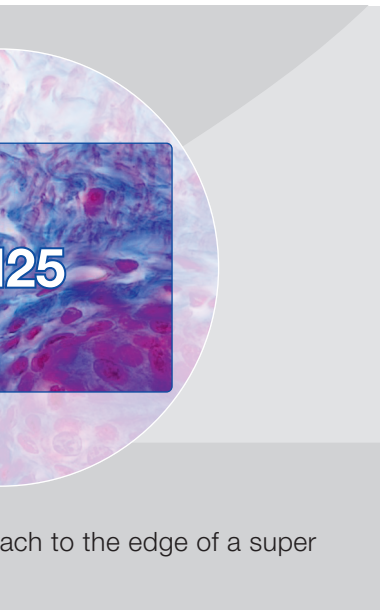
### Step 3—Choose Your Observation Tube



Trinocular tube (FN22) with 30° inclination and interpupillary distance adjustment. Light partitioning selector (Binocular/Camera: 100/0, 20/80, 0/100).



Tilting trinocular observation tube (FN22) with adjustable inclination of 5°–35° and interpupillary distance adjustment. Light partitioning selector (Binocular/Camera: 0/100, 100/0, 50/50).



Super wide field of view (FN 26.5) trinocular tube with fixed 24° inclination and interpupillary distance adjustment. Light partitioning selector (Binocular/Camera: 0/100, 100/0, 20/80).



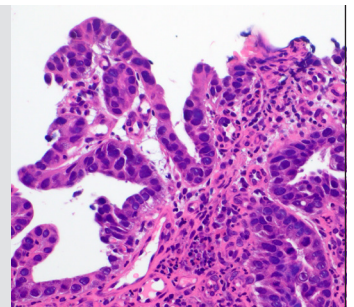
Super wide field of view (FN 26.5) trinocular tube with variable inclination and erect image. Interpupillary distance adjustment and light partitioning selector (Binocular/Camera: 100/0, 20/80).

### Bright, Even LED Illumination Across Your Field of View



The BX53 microscope with True Color LED provides bright, sharp images with color rendering performance equivalent to standard halogen illumination.

The long-life LED is brighter and more uniform than a 100-watt halogen bulb, matching any contrast method. Its homogenous illumination enables you to fully utilize a large field of view.



# One-Touch Wide Capture

Wide capture with the DP23 and DP28 microscope digital cameras is also available in a stand-alone version, which does not require connection to a computer or extra software. In this configuration, a simple and intuitive interface on a connected monitor allows single-click operations for many functions, so you can enjoy Wide Capture images in seconds with a single touch of a button.



## DP28 Specifications

Type		8.9-megapixel color camera
Imaging sensor	Sensor type	1-inch color CMOS
	Shutter type	Global shutter
	Pixel size	3.45 μm × 3.45 μm
	Dynamic range	10 bit
Sensitivity	Gain	1–24
	Mount	C-mount
Exposure control	Camera adaptor	C-mount
	Exposure mode	Manual, Auto
	Exposure spot size	Full image, 30%, 1.0%, 0.1%
	Exposure adjustment	-2 to +2 (in 1/6 step)
Exposure time	Auto exposure	AE lock, AE slow down
		Manual exposure: 27 μs–15 s Auto exposure: 27 μs–15 s
Camera I/F		USB 3.1 Type-C <sup>1</sup> (cable length: 2.9 m (9.5 ft))
Dimensions	Camera head (W × D × H)	76.7 mm × 70.1 mm × 37.3 mm (3 in. × 2.8 in. × 1.5 in.)
	Control unit (W × D × H)	180 mm × 180 mm × 53 mm (7 in. × 7 in. × 2 in.)

	PC connection <sup>2</sup>	Standalone
Image size (W × H)	4104 × 2174 (full resolution)	4104 × 2174 (full resolution)
	3840 × 2160 (4K)	3840 × 2160 (4K)
	2168 × 2168 (square)	2168 × 2168 (square)
	2052 × 1086 (sub-sampling 2 × 2—high speed)	2052 × 1086 (sub-sampling 2 × 2—high speed)
	2052 × 1086 (binning 2 × 2—high sensitivity)	2052 × 1086 (binning 2 × 2—high sensitivity)
Live image display (frame rate) <sup>3</sup>	1920 × 1080 (full HD)	1920 × 1080 (full HD)
	32 fps (full resolution)	30 fps (full resolution)
	33 fps (4K)	30 fps (4K)
	33 fps (square)	30 fps (square)
	64 fps (sub-sampling 2 × 2—high sensitivity)	60 fps (sub-sampling 2 × 2—high speed)
	32 fps (binning 2 × 2)	30 fps (binning 2 × 2—high sensitivity)
	64 fps (full HD)	60 fps (full HD)

## DP23 Specifications

Type		6.4-megapixel color camera
Imaging sensor	Sensor type	1/1.8-inch color CMOS
	Shutter type	Rolling shutter
	Pixel size	2.4 μm × 2.4 μm
	Dynamic range	10 bit
Sensitivity	Gain	1–24
Mount	Camera adaptor	C-mount
Exposure time		Manual exposure: 13 μs–15 s Auto exposure: 13 μs–15 s
	Camera I/F	USB 3.1 Type-C <sup>1</sup> (cable length: 2.9 m (9.5 ft))
Dimensions	Camera head (W × D × H)	76.7 mm × 70.1 mm × 37.3 mm (3 in. × 2.8 in. × 1.5 in.)
	Control unit (W × D × H)	180 mm × 180 mm × 53 mm (7 in. × 7 in. × 2 in.)

	PC connection <sup>2</sup>	Standalone
Image size (W × H)	3088 × 2076 (full resolution)	3088 × 2076 (full resolution)
	2072 × 2072 (square)	2072 × 2072 (square)
	1544 × 1038 (sub-sampling 2 × 2—high speed)	1544 × 1038 (sub-sampling 2 × 2—high speed)
	1544 × 1038 (binning 2 × 2—high sensitivity)	1544 × 1038 (binning 2 × 2—high sensitivity)
	1920 × 1080 (full HD)	1920 × 1080 (full HD)
Live image display (frame rate) <sup>3</sup>	45 fps (full resolution)	30 fps (full resolution)
	58 fps (square)	43 fps (square)
	59 fps (sub-sampling 2 × 2—high speed)	59 fps (sub-sampling 2 × 2—high speed)
	59 fps (binning 2 × 2)	59 fps (binning 2 × 2)
	60 fps (full HD)	60 fps (full HD)

<sup>1</sup> USB 3.1 Gen1 is compatible with USB 3.0.

<sup>2</sup> Refer to the PC requirements of cellSens software.

<sup>3</sup> Frame rate may decrease, depending on the condition of your PC and/or software.

000 «Диаэм»

Москва

ул. Магаданская, д. 7, к. 3 ■ тел./факс: (495) 745-0508 ■ sales@dia-m.ru

www.dia-m.ru

**С.-Петербург**  
+7 (812) 372-6040  
spb@dia-m.ru

**Новосибирск**  
+7 (383) 328-0048  
nsk@dia-m.ru

**Воронеж**  
+7 (473) 232-4412  
vrn@dia-m.ru

**Йошкар-Ола**  
+7 (927) 880-3676  
nba@dia-m.ru

**Красноярск**  
+7 (923) 303-0152  
krsk@dia-m.ru

**Казань**  
+7 (843) 210-2080  
kazan@dia-m.ru

**Ростов-на-Дону**  
+7 (863) 303-5500  
rnd@dia-m.ru

**Екатеринбург**  
+7 (912) 658-7606  
ekb@dia-m.ru

**Кемерово**  
+7 (923) 158-6753  
kemeroovo@dia-m.ru

**Армения**  
+7 (094) 01-0173  
armenia@dia-m.ru

