

KangarooSci™ *Microbial Count Plate*



Microbiology - the cause of 95% of food safety issues

Microorganisms are of great significance to foods for several reasons. The most significant one is that they can cause spoilage of foods and can also be applied to manufacture a wide variety of food products, as well as cause microbial diseases transmitted by foods.

According to world food safety market research and statistics, 95% of the issues in food safety is caused by microbiology.

Detection, identification and enumeration of these foodborne microorganisms are of great importance. From general food hygiene to pathogens enumeration, it is necessary and urgent to make sure that the foods are safe for human consumption.

Foods can be considered as a medium for microbial growth. Considering the vast array of sources, substances, and methods with which food is produced, practically every kind of microbe is a potential contaminant.

Conventional detection of pathogenic bacteria is mainly based on cultivation procedures, which use enrichment broths followed by the isolation of colonies on selective media, biochemical identification and confirmation of pathogenicity. This culture method is selective for the search of one type of pathogen at a time. Currently, both ISO and AOAC official methods are based on these principles.

Here at Ringbio, we have successfully developed many new microbiology count plate - based on selective medium to enumerate the food microorganisms in various samples. In this leaflet, you will find the details and ordering information.

We guarantee you a rapid, sensitive, reliable, reproducible result.



Readily-Usable Microbiology Enumeration Medium Plate



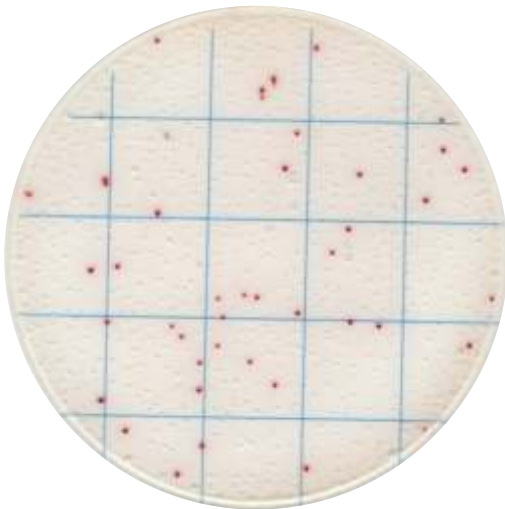
No more culture medium preparation

No extra reagent required

Less time & less labor work

ISO & AOAC standards compatible

1-24-C Easy Determination



1ml Sample Suspension

1ml of solid sample suspension or 1ml liquid sample in PBS, adjust the pH to neutral.

24h Incubation

Incubate at 36 °C for 22 - 24h.

Check the result

Enumerate the colonies according to the kit instruction manual. Further identification can be performed if necessary.

Product #	Description	Result	Incubation
KGR001	Aerobic Count Plate	Red colony	36±1°C, 48±2h
KGR002	Staph Count Plate	Dark purple red colony	36±1°C, 24±2h
KGR003	Pivot E. coli / Coliform Count Plate	Blue purple colony	36±1°C, 24±2h
KGR004	Pivot Coliform Count Plate	Green colony	36±1°C, 24±2h
KGR005	Listeria Count Plate	Blue green colony	36±1°C, 24±2h
KGR010	Coliform Count Plate	Red colony	36±1°C, 18-24h
KGR011	E. coli / Coliform Count Plate	Blue purple & red colony	36±1°C, 18-24h

Readily-Usable Microbiology Enumeration Medium Plate



No more culture medium preparation

No extra reagent required

Less time & less labor work

ISO & AOAC standards compatible

Product #	Description	Result	Incubation
KGR013	Bacillus Cereus Count Plate	Purple red colony	36±1°C, 48±2h
KGR015	Salmonella Count Plate	Purple red colony	36±1°C, 24±2h
KGR016	Enterobacteriaceae Count Plate	Red colony	36±1°C, 18-24h
KGR017	Geobacillus s. Count Plate	Red colony	55±1°C, 36±1h
KGR018	Enterococcus f. Count Plate	Black&black green colony	36±1°C, 26±2h
KGR019	Bacillus Psychrophilus Count Plate	Red colony	21±1°C, 48-60h
KGR024	Aerobic Bacillus Count Plate	Red colony	36±1°C, 24±2h
KGR026	Listeria m. Count Plate	Blue green colony	36±1°C, 36h

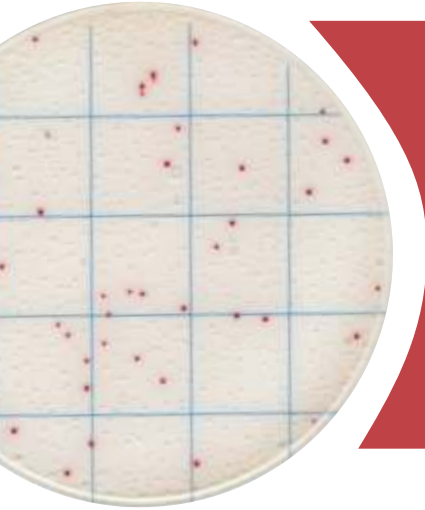
More products are being developed for microbiology testing in food and beverage industry.

KangarooSci™ Microbial Count Plates

Aerobic Count Plate

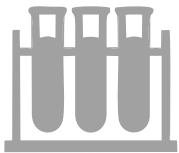
Product Code: KRG001

12 plates / pack

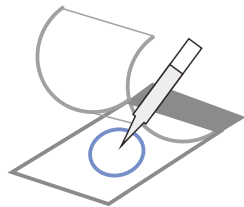


KangarooSci® Aerobic Count Plate (ACP) is a sample-ready-culture medium system which contains readymade dry medium, a cold-water-soluble gelling agent and indicator. It can be used in direct counting of aerobic colonies after 48h – 72h incubation. The result is consistent with the corresponding ISO standards and other commercial counting plates.

Read the user manual carefully before test, and follow the instructions. Failure to do so may lead to inaccurate results.



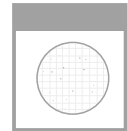
Sample Preparation



Sampling



Incubation



Enumeration

This KangarooSci® Aerobic Count Plate is applicable for the counting of as many as 65 aerobic bacteria. All will produce red colonies for counting, regardless of the size and clarity.

The following bacteria has been tested successfully with this count plate

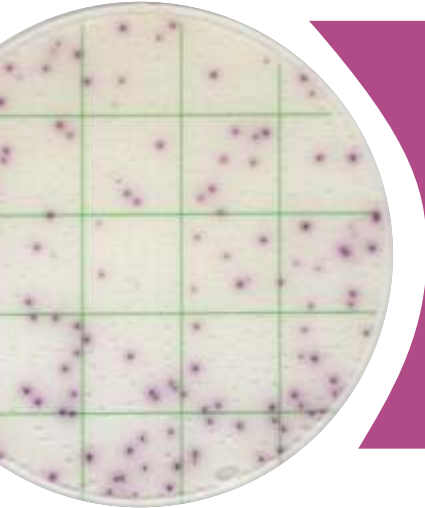
ATCC 8099, CICC 10305, ATCC 25922, CICC 10003, CICC 10389, CICC 10907, CICC 21530, CICC 10667, CICC 24190, CICC 24186, CICC 24188, CICC 24187, ATCC 25955, ATCC 10031, ATCC 13883, ATCC 13048, ATCC 29544, ATCC 25931, ATCC 12022, CICC 10865, CICC 23829, CICC 21534, CICC 21535, ATCC 9207, ATCC 15947, ATCC 51114, ATCC 43864, ATCC 25405, GDMCC 1.163, ATCC 13311, CICC 21501, CICC 21495, CICC 21512, CICC 21501, ATCC 27511, ATCC 33291, ATCC 43478, CICC 10869, ATCC 19433, ATCC 19258, CICC 20247, ATCC 8014, CICC 6009, ATCC 6538, ATCC 25923, CICC 10384, ATCC 27217, ATCC 12228, CMCC 26069, CICC 21602, ATCC 8032, ATCC 33090, ATCC 19111, ATCC 35967, ATCC 19119, ATCC 35897, ATCC 25401, CICC 20483, CICC 21261, ATCC 11778, ATCC 6633, CICC 10071, etc.

KangarooSci™ Microbial Count Plates

Staphylococcus aureus Count Plate

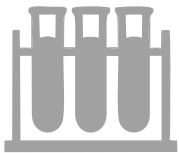
Product Code: KRG002

12 plates / pack

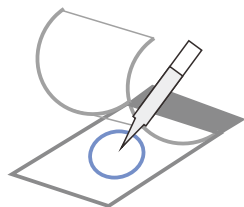


KangarooSci® *Staphylococcus aureus* Count Plate is a sample-ready-culture medium system which contains readymade Baird-Parker medium, a cold-water-soluble gelling agent indicator and selective inhibitor. It can be used in direct counting of *staphylococcus aureus* colonies after 24h incubation. The result is consistent with ISO standards and commercial counting plates.

Read the user manual carefully before test, and follow the instructions. Failure to do so may lead to inaccurate results.



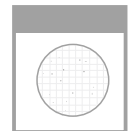
Sample Preparation



Sampling



Incubation



Enumeration

Incubate the plates at 36 ± 1 °C for 24 ± 2 hours. '

For aquatic products, please incubate at 30 ± 1 °C for 72 ± 3 hours for. Up to 6 plates can be stacked in one incubation holder.

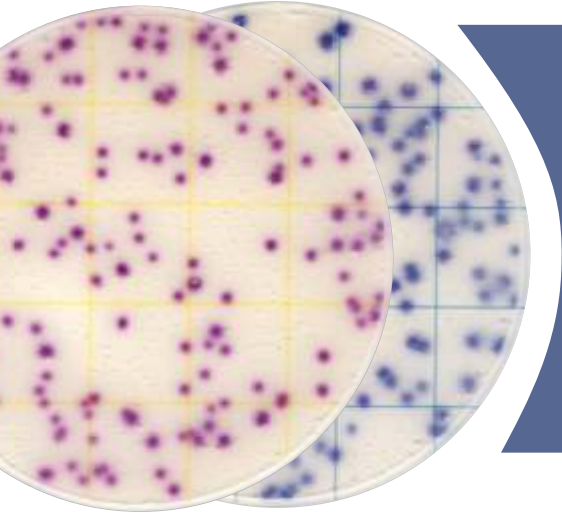
On this **KangarooSci**® *Staphylococcus aureus* count plate, *Staphylococcus aureus* is red colonies, other *staphylococcus* is light pink green or colorless colonies. Majority of gram-negative and other gram-positive bacterium cannot grow in this plate, or they can present as blue colonies.

KangarooSci™ Microbial Count Plates

Pivot E. coli/Coliform Count Plate

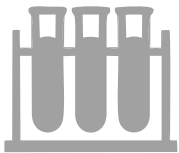
Product Code: KRG003

12 plates / pack

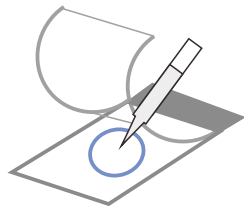


KangarooSci® Pivot E. coli/Coliform Count Plate (ECCP) is a sample-ready-culture medium system which contains readymade dry medium, a cold-water-soluble gelling agent and indicator. It can be used in direct counting of E. coli and Coliform colonies after 24h incubation.

Read the user manual carefully before test, and follow the instructions. Failure to do so may lead to inaccurate results.



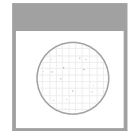
Sample Preparation



Sampling



Incubation



Enumeration

Incubate the plates at 36 ± 1 °C for 24 ± 2 hours. Up to 6 plates can be stacked in one incubation holder.

Counting of Coliform: Count colonies within 15-150 CFU. All red or blue colonies shall be counted regardless of the size or intensity.

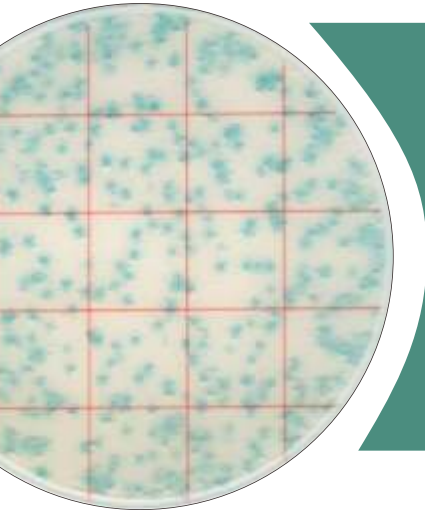
Counting of E. coli: Count colonies within 10-100 CFU. All blue colonies shall be counted regardless of the size or intensity.

KangarooSci™ Microbial Count Plates

Pivot Coliform Count Plate

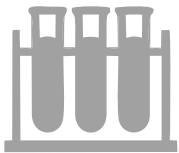
Product Code: KRG004

12 plates / pack

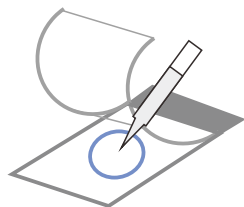


KangarooSci® Pivot Coliform Count Plate (CCP) is a sample-ready-culture medium system which contains readymade dry medium, a cold-water-soluble gelling agent and indicator. It can be used in direct counting of coliform colonies after 24h incubation. The result is consistent with the corresponding ISO standards and other commercial counting plates.

Read the user manual carefully before test, and follow the instructions. Failure to do so may lead to inaccurate results.



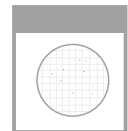
Sample Preparation



Sampling



Incubation



Enumeration

This **KangarooSci®** Pivot Coliform Count Plate (CCP) can be used in the quantitative plating of Coliform Colonies in the food and beverage industries. Other applications are available upon request. Contact your supplier for more details.

Quantitative counting of the plate can be done by a standard colony counter or by software. All green colonies shall be counted regardless of the size or intensity.

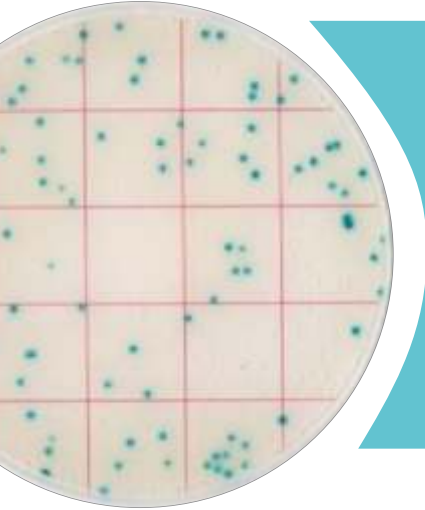
Count colonies within 15-150 CFU, count all the green colonies.

KangarooSci™ Microbial Count Plates

Listeria Count Plate

Product Code: KRG005

12 plates / pack

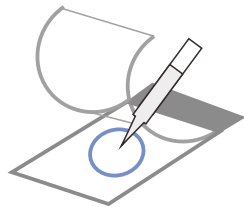


KangarooSci® Aerobic Count Plate (ACP) is a sample-ready-culture medium system which contains readymade dry medium, a cold-water-soluble gelling agent and indicator. It can be used in direct counting of aerobic colonies after 48h – 72h incubation. The result is consistent with the corresponding ISO standards and other commercial counting plates.

Read the user manual carefully before test, and follow the instructions. Failure to do so may lead to inaccurate results.



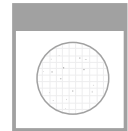
Sample Preparation



Sampling



Incubation



Enumeration

This **KangarooSci**® Listeria Count Plate can be used in the quantitative plating of Listeria Colonies in the food, food material, water and production environment.

Quantitative counting of the plate can be done by a standard colony counter or by software. All green colonies shall be counted regardless of the size or intensity.

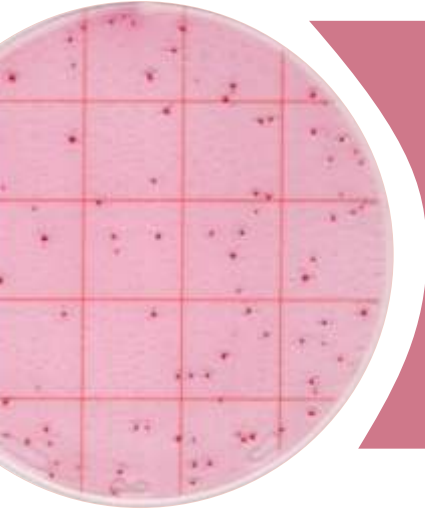
Count colonies within 30-200 CFU, count all the green colonies.

KangarooSci™ Microbial Count Plates

Coliform Count Plate

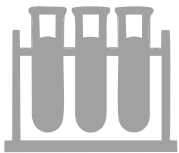
Product Code: KRG010

12 plates / pack

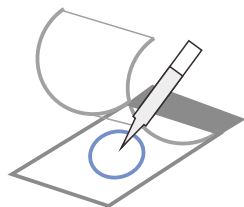


KangarooSci® Coliform Count Plate is a sample-ready-culture medium system which contains readymade dry medium, a cold-water-soluble gelling agent and indicator. It can be used in direct counting of coliform colonies after 18h – 24h incubation. The result is consistent with the corresponding ISO standards and other commercial counting plates.

Read the user manual carefully before test, and follow the instructions. Failure to do so may lead to inaccurate results.



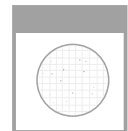
Sample Preparation



Sampling



Incubation



Enumeration

This **KangarooSci®** Coliform Count Plate can be used in the quantitative plating of Coliform Colonies in the food and beverage industries.

Incubate the plates at 36 ± 1 °C for 18-24 hours. Up to 6 plates can be stacked in one incubation holder.

Quantitative counting of the plate can be done by a standard colony counter or by software. All red colonies shall be counted regardless of the size or intensity.

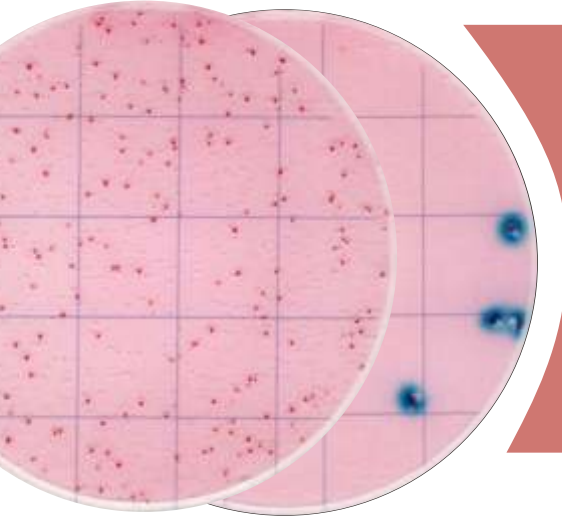
Count colonies within 15-150 CFU, count all the red colonies.

KangarooSci™ Microbial Count Plates

E. coli/Coliform Count Plate

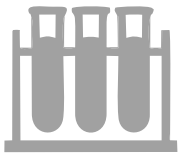
Product Code: KRG011

12 plates / pack

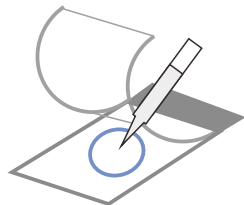


KangarooSci® E. coli/Coliform Count Plate is a sample-ready-culture medium system which contains readymade dry medium, a cold-water-soluble gelling agent and indicator. It can be used in direct counting of E. coli/Coliform colonies after 18-24h incubation. The result is consistent with the ISO standards and other commercial plates.

Read the user manual carefully before test, and follow the instructions.
Failure to do so may lead to inaccurate results.



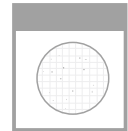
Sample Preparation



Sampling



Incubation



Enumeration

This **KangarooSci®** E. coli/Coliform Count Plate can be used in the quantitative plating of E. coli/Coliform Colonies in the food and beverage industries.

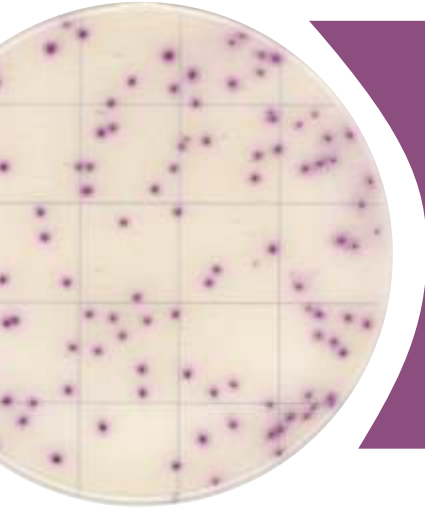
Coliform can grow in this plate, Escherichia Coli are **blue colonies** associated with gas bubble, Klebsiella pneumonia and enterobacter cloacae are **red colonies** associated with gas bubble, Citrobacter are **red colonies** without gas bubble. Other gram-negative bacterium (Salmonella, Shigella) can grow in this plate, their colonies are red without gas bubble. Enterobacter Sakazakii can grow in this plate, its colonies are red associated with gas bubble.

KangarooSci™ Microbial Count Plates

Bacillus cereus Count Plate

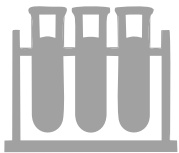
Product Code: KRG013

12 plates / pack

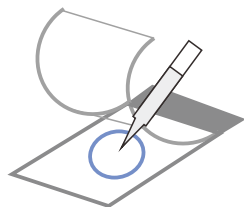


KangarooSci® Bacillus cereus Count Plate (BCCP) is a sample-ready-culture medium system which contains readymade dry medium, a cold-water-soluble gelling agent and indicator. It can be used in direct counting of Bacillus cereus colonies after 24h incubation. The result is consistent with the corresponding ISO standards and other commercial counting plates.

Read the user manual carefully before test, and follow the instructions. Failure to do so may lead to inaccurate results.



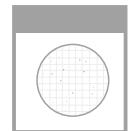
Sample Preparation



Sampling



Incubation



Enumeration

This **KangarooSci®** Bacillus cereus Count Plate (BCCP) can be used in the quantitative plating of Bacillus cereus Colonies in the food and beverage industries. Other applications are available upon request. Contact your supplier for more details.

Quantitative counting of the plate can be done by a standard colony counter or by software. All purple red colonies shall be counted regardless of the size or intensity.

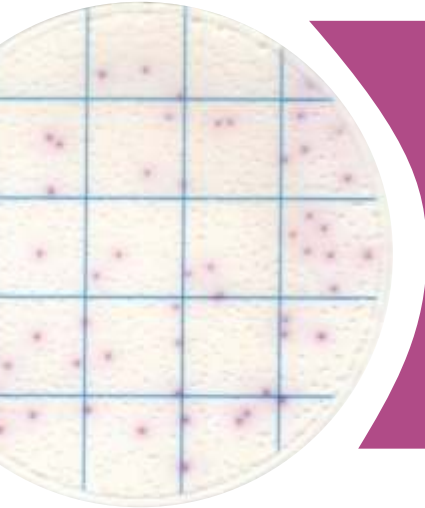
Count colonies within 20-200 CFU, count all the purple red colonies.

KangarooSci™ Microbial Count Plates

Salmonella Count Plate

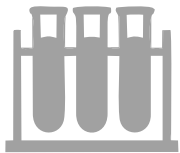
Product Code: KRG015

12 plates / pack

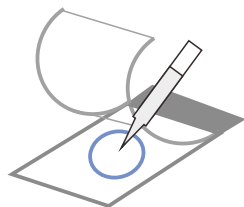


KangarooSci® Salmonella Count Plate (SCP) is a sample-ready-culture medium system which contains readymade dry medium, a cold-water-soluble gelling agent and indicator. It can be used in direct counting of Salmonella colonies after 24h incubation. The result is consistent with the corresponding ISO standards and other commercial counting plates.

Read the user manual carefully before test, and follow the instructions. Failure to do so may lead to inaccurate results.



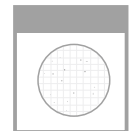
Sample Preparation



Sampling



Incubation



Enumeration

This **KangarooSci®** Salmonella Count Plate (SCP) can be used in the quantitative plating of Salmonella Colonies in the food and beverage industries. Other applications are available upon request. Contact your supplier for more details.

Quantitative counting of the plate can be done by a standard colony counter or by software. All purple red colonies shall be counted regardless of the size or intensity.

Count colonies within 30-200 CFU, count all the purple red colonies.

Ringbio

KangarooSci™

The new generation of *Microbial Count Plate*

For additional information, please contact us.

Ring Biotechnology © 2022

Ring Biotechnology Co Ltd

Add: Building 3, Zhongtongtai Science Park,
No. 11, Kechuang 14th St,
Beijing 100176, CHINA

Tel: +86-10-56267496

Web: www.ringbio.com

000 «Диаэм»

Москва

ул. Магаданская, д. 7, к. 3 ■ тел./факс: (495) 745-0508 ■ sales@dia-m.ru

www.dia-m.ru

С.-Петербург
+7 (812) 372-6040
spb@dia-m.ru

Новосибирск
+7(383) 328-0048
nsk@dia-m.ru

Воронеж
+7 (473) 232-4412
vrn@dia-m.ru

Йошкар-Ола
+7 (927) 880-3676
nba@dia-m.ru

Красноярск
+7(923) 303-0152
krsk@dia-m.ru

Казань
+7(843) 210-2080
kazan@dia-m.ru

Ростов-на-Дону
+7 (863) 303-5500
rnd@dia-m.ru

Екатеринбург
+7 (912) 658-7606
ekb@dia-m.ru

Кемерово
+7 (923) 158-6753
kemerovo@dia-m.ru

Армения
+7 (094) 01-0173
armenia@dia-m.ru

